

AIRTECH

EUROPE Sarl



AIRTECH

ADVANCED
MATERIALS
GROUP

Vacuum Bagging for General Composite Moulding

Autumn 2020



Contact Us

📍 **Address:** 18, ZI Haneboesch,
L-4562 Differdange
Luxembourg

☎ **Phone:** +352 58 22 82 1

✉ **Email:** sales@airtech.lu

Find Us

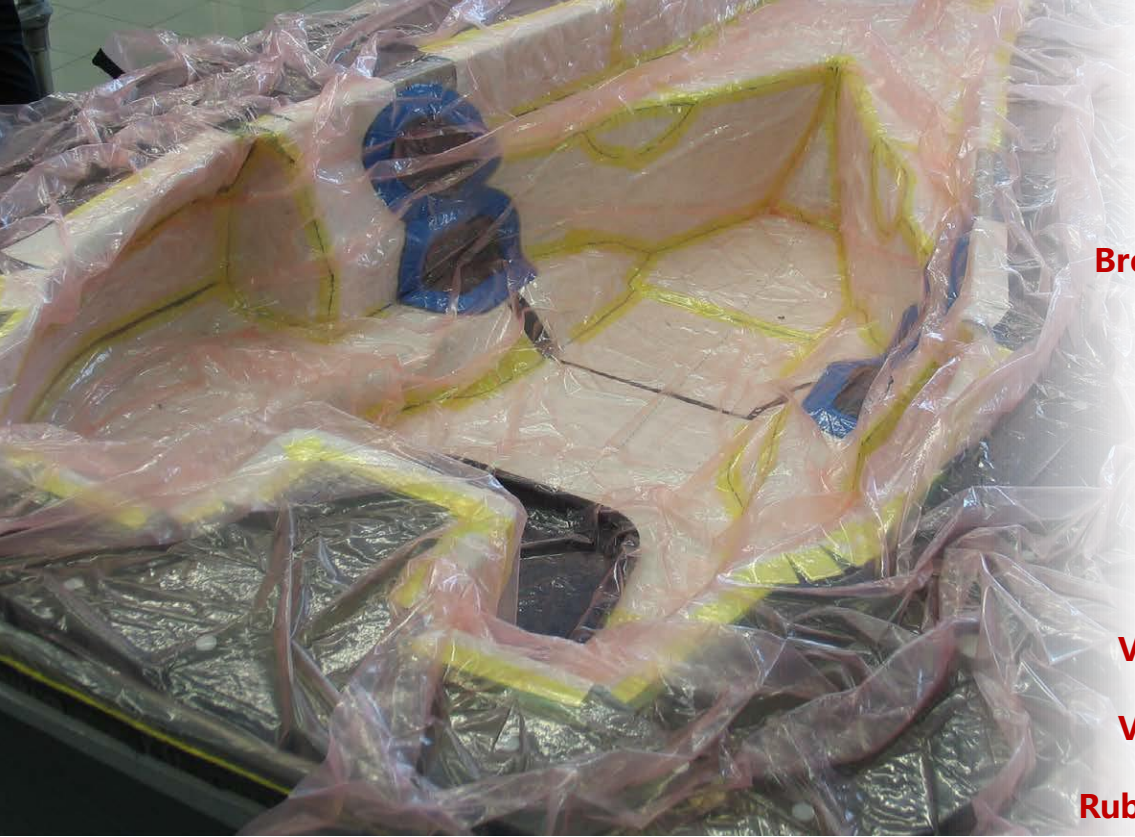
www.airtech.lu
www.airtech3D.com



AIRTECH
ADVANCED MATERIALS GROUP

© Copyright 2020. Airtech Advanced Materials Group. All Rights Reserved.

Welcome



Vacuum Bag Films

Release Films

Release Fabrics

Breathers & Bleeders

Combo-Tech

PS Tapes

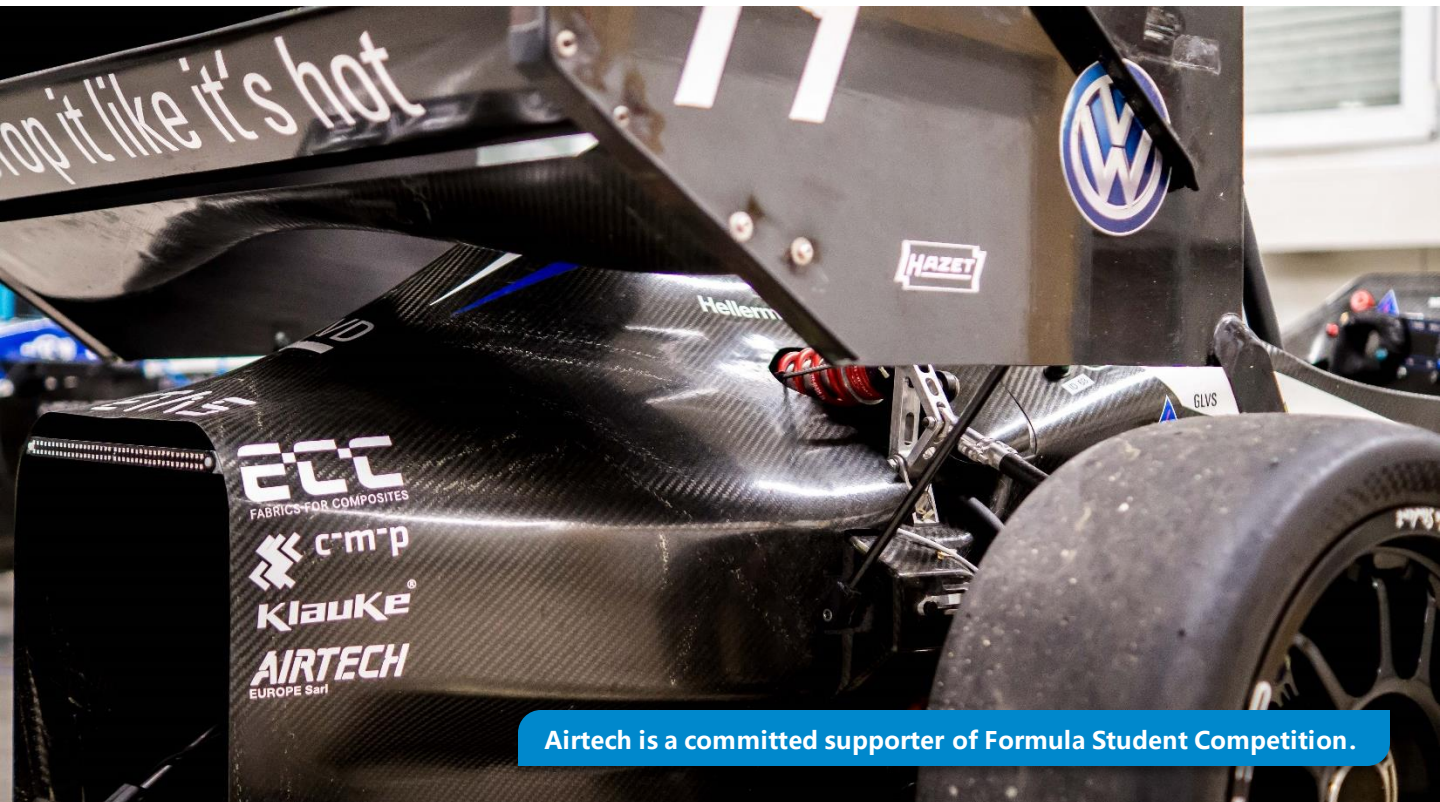
Mould Releases

Sealant Tapes

Vac Valves & Hoses

Vac Gauges & Tools

Rubber & Accessories



Airtech is a committed supporter of Formula Student Competition.

What's New for General Composites in Autumn 2020

Wrightlon® 600V Vacuum bag film

Wrightlon® 600V vacuum bagging film is designed for low cost, commercial applications yet still performs with high pressure autoclave cure cycles.

It has good elongation and stays soft in low humidity conditions which makes bagging easier and reduces cycle times.



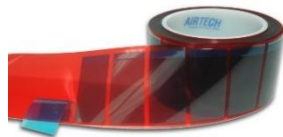
Wrightlon® 5200 Release film

Wrightlon® 5200 release film has an excellent elongation which ensures that it will conform to complex curvatures. It is capable of cure temperatures up to 260°C.

This film will release from most resin systems and will provide a glossy finish when used directly on the laminate. Colour options: available in red, blue and yellow.

Flashbreaker® 1 Cut strips with pull tab

Flashbreaker® tapes are high strength polyester films coated with a silicone adhesive available as precision cut strips of tape on a liner, available 1" x 2". Flashbreaker®1 is on poly liner with "pull-tabs".



Wrightlease Extruded fluoropolymer tape

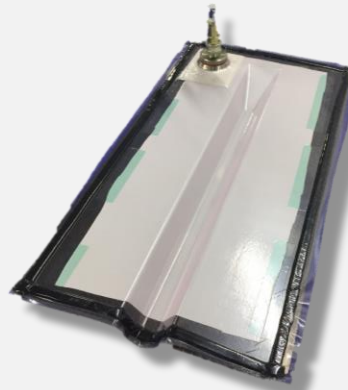
Wrightlease is a non-stick tape for applications where resin release is required. The orange colour is highly visible on most substrates in addition to offering high elongation and tensile strength. Also available in cut strips version.



Airtac 2 LH Spray adhesive

Airtac 2 Low Hazard is a fine mist spray adhesive with excellent tack and bond strength for hold dry fabric reinforcements and vacuum bag materials during infusion setups.

Airtac 2 LH is lower cost and safer to use than standard shop adhesive sprays.



Stretch Flow 2000 Breather fabric

Stretch Flow 2000 is a knitted, nylon, stretchable breather used in a variety of applications.

The high-stretch characteristics of Stretch Flow 2000 enable it to conform to many complex contour surfaces.

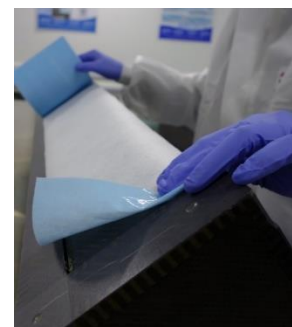
AS1 Vacuum bag sealant tape

AS1 is an economical multi-purpose sealant tape with high tack. It removes easily from metal or composite tools. Suitable for cure applications up to 120°C.



Combo-Tech Combination materials

Combo-Tech technology from Airtech combines materials for great labour savings during layup process. Combination of products are applied in one operation as opposed to applying one layer at a time.



Vacuum bagging films



Chassis being bagged for cure. Airtech manufactures vacuum bag films, developing new film types for new applications & processes.



Airtech manufactures vacuum bag films, including lower cost films for autoclave production.

Airtech manufactured vacuum bag films made for composites

Wrightlon® 250Y

New Low Cost Film

| Maximum Use Temperature | Elongation | Tensile Strength | Roll Sizes (Inches) | Roll Sizes (Metric) |
|--|------------|------------------|---------------------------|-------------------------|
| 150°C | 400% | 41,4 MPa | 0,002" x 24" LFT x 1000ft | 50µm x 610mm LFT x 304m |
| Description | | | 0,002" x 36" LFT x 1000ft | 50µm x 914mm LFT x 304m |
| Wrightlon® 250Y vacuum bagging film has high elongation, flexibility and tensile strength. The enhanced physical values allow for added security even in harsh environments. | | | 0,002" x 48" LFT x 1000ft | 50µm x 1,22m LFT x 304m |
| Wrightlon® 250Y is well suited for automotive, marine and other commercial vacuum bagging applications. It is ideal for both autoclave and oven cures. | | | 0,002" x 60" LFT x 1000ft | 50µm x 1,52m LFT x 304m |
| | | | 0,002" x 80" LFT x 750ft | 50µm x 2,03m LFT x 228m |
| | | | 0,002" x 90" LFT x 750ft | 50µm x 2,29m LFT x 228m |
| | | | 0,002" x 120" LFT x 750ft | 50µm x 3,05m LFT x 228m |

L-550G

Economical Film

| Maximum Use Temperature | Elongation | Tensile Strength | Roll Sizes (Inches) | Roll Sizes (Metric) |
|--|------------|------------------|-----------------------------|-------------------------|
| 171°C | 400% | 52 MPa | 0,002" x 18" LFT x 1000ft | 50µm x 457mm LFT x 304m |
| Description | | | 0,002" x 24" LFT x 1000ft | 50µm x 610mm LFT x 304m |
| L-550G vacuum bagging film is available in wide sizes and has high elongation and high tensile strength. The enhanced physical values allow for added security even in harsh environments. L-550G is well suited for wind energy, marine, and other commercial applications. | | | 0,002" x 36" LFT x 1000ft | 50µm x 914mm LFT x 304m |
| | | | 0,002" x 48" LFT x 1000ft | 50µm x 1,22m LFT x 304m |
| | | | 0,002" x 60" LFT x 1000ft | 50µm x 1,52m LFT x 304m |
| | | | 0,002" x 80" LFT x 750ft | 50µm x 2,03m LFT x 228m |
| | | | 0,002" x 90" LFT x 750ft | 50µm x 2,29m LFT x 228m |
| | | | 0,002" x 118,5" LFT x 420ft | 50µm x 3,00m LFT x 128m |

Wrightlon® 600V

Strong Film

| Maximum Use Temperature | Elongation | Tensile Strength | Roll Sizes (Inches) | Roll Sizes (Metric) |
|--|------------|------------------|---------------------------|-------------------------|
| 204°C | 400% | 65 MPa | 0,002" x 12" LFT x 1000ft | 50µm x 304mm LFT x 304m |
| Description | | | 0,002" x 18" LFT x 1000ft | 50µm x 457mm LFT x 304m |
| Wrightlon® 600V vacuum bagging film is designed for low cost, commercial applications yet still performs with high pressure autoclave cure cycles. It has good elongation and stays soft in low humidity conditions. | | | 0,002" x 24" LFT x 1000ft | 50µm x 610mm LFT x 304m |
| | | | 0,002" x 36" LFT x 1000ft | 50µm x 914mm LFT x 304m |
| | | | 0,002" x 48" LFT x 1000ft | 50µm x 1,22m LFT x 304m |
| | | | 0,002" x 60" LFT x 1000ft | 50µm x 1,52m LFT x 304m |
| | | | 0,002" x 80" LFT x 750ft | 50µm x 2,03m LFT x 228m |
| | | | 0,002" x 90" LFT x 750ft | 50µm x 2,29m LFT x 228m |
| | | | 0,002" x 118" LFT x 500ft | 50µm x 2,99m LFT x 152m |

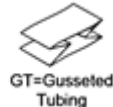
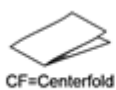
Stretchlon® 850

#1 Choice for Softness

| Maximum Use Temperature | Elongation | Tensile Strength | Roll Sizes (Inches) | Roll Sizes (Metric) |
|--|------------|------------------|---------------------------|-------------------------|
| 204°C | 450% | 69 MPa | 0,002" x 2" LFT x 500ft | 50µm x 51mm LFT x 152m |
| Description | | | 0,002" x 3" LFT x 500ft | 50µm x 75mm LFT x 152m |
| Stretchlon® 850 is a high elongation film in tube form with a good softness which will conform to complex contours. This film is designed to remain more flexible than standard nylon films in low humidity conditions. Stretchlon® 850 is recommended for epoxy and BMI resins. | | | 0,002" x 4" LFT x 500ft | 50µm x 101mm LFT x 152m |
| | | | 0,002" x 5" LFT x 500ft | 50µm x 127mm LFT x 152m |
| | | | 0,002" x 6" LFT x 1000ft | 50µm x 152mm LFT x 304m |
| | | | 0,002" x 8" LFT x 1000ft | 50µm x 203mm LFT x 304m |
| | | | 0,002" x 9" LFT x 1000ft | 50µm x 228mm LFT x 304m |
| | | | 0,002" x 10" LFT x 1000ft | 50µm x 254mm LFT x 304m |
| | | | 0,002" x 12" LFT x 1000ft | 50µm x 304mm LFT x 304m |
| | | | 0,002" x 16" LFT x 1000ft | 50µm x 406mm LFT x 304m |
| | | | 0,002" x 18" LFT x 1000ft | 50µm x 457mm LFT x 304m |
| | | | 0,002" x 24" LFT x 1000ft | 50µm x 610mm LFT x 304m |
| | | | 0,002" x 27" LFT x 1000ft | 50µm x 686mm LFT x 304m |
| | | | 0,002" x 36" LFT x 1000ft | 50µm x 914mm LFT x 304m |
| | | | 0,002" x 40" LFT x 1000ft | 50µm x 1,02m LFT x 304m |
| | | | 0,002" x 48" LFT x 1000ft | 50µm x 1,22m LFT x 304m |
| | | | 0,002" x 54" LFT x 1000ft | 50µm x 1,37m LFT x 304m |
| | | | 0,002" x 60" LFT x 1000ft | 50µm x 1,52m LFT x 304m |
| | | | 0,002" x 80" LFT x 750ft | 50µm x 2,03m LFT x 228m |
| | | | 0,002" x 90" LFT x 750ft | 50µm x 2,29m LFT x 228m |
| | | | 0,002" x 118" LFT x 300ft | 50µm x 2,99m LFT x 91m |

NOTES:

- Other products are available, please visit www.airtech.lu for full product selection.
- Other sizes are available on special order, please contact your Airtech customer service representative for complete details.

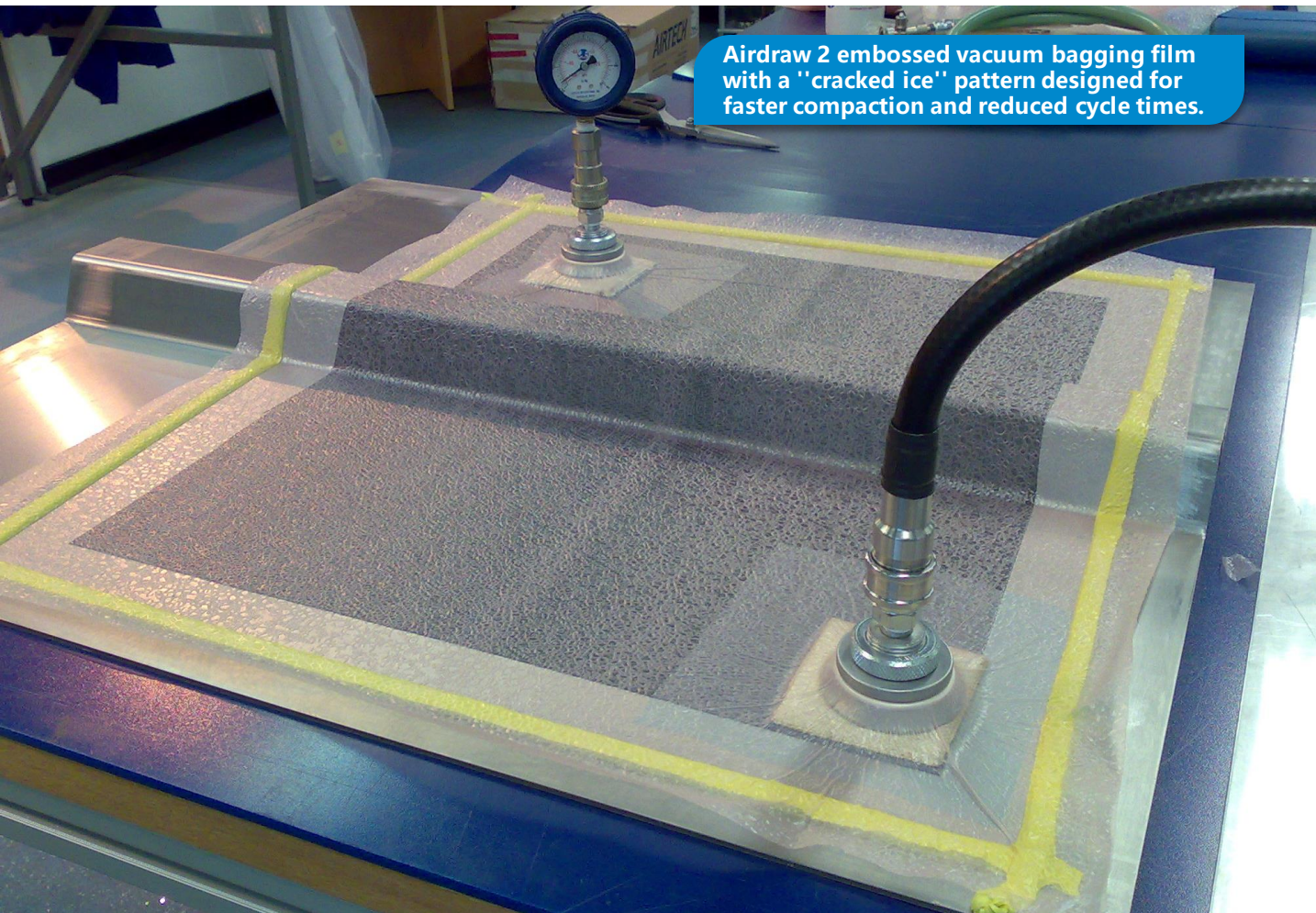


Vacuum bagging films

Dahlar® RB375 small bore tubing with gusset inside a hollow stringer. Easier to position during layup, easier to remove after cure, saving time.



Airdraw 2 embossed vacuum bagging film with a "cracked ice" pattern designed for faster compaction and reduced cycle times.



Small bore and embossed vacuum bag films

Dahlar® Release Bag 375

Self-Releasing Vac Film

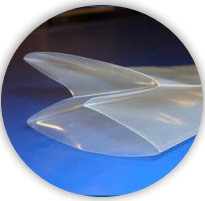
| Maximum Use Temperature | Elongation | Tensile Strength | Roll Sizes (Inches) | Roll Sizes (Metric) |
|---|------------|------------------|----------------------------|-------------------------|
| 155°C | 475% | 40 MPa | 0,0027" x 2" LFT x 500ft | 70µm x 51mm LFT x 152m |
| Description | | | 0,0027" x 2.5" LFT x 500ft | 70µm x 63mm LFT x 152m |
| <p>Dahlar® Release Bag 375 is a self releasing multi-layer bagging film for direct contact with prepreg for fabrication of hollow parts such as bicycle components, fishing rods, masts, etc. It exhibits superior strength, temperature resistance and vacuum integrity of Airtech's multi-layer film technology. Dahlar® Release Bag 375 exhibits excellent release off epoxy and polyester resins.</p> | | | 0,0027" x 3" LFT x 500ft | 70µm x 75mm LFT x 152m |
| | | | 0,0027" x 4" LFT x 1000ft | 70µm x 101mm LFT x 304m |
| | | | 0,0027" x 5" LFT x 500ft | 70µm x 127mm LFT x 152m |
| | | | 0,0027" x 6" LFT x 1000ft | 70µm x 152mm LFT x 304m |
| | | | 0,0027" x 8" LFT x 1000ft | 70µm x 203mm LFT x 304m |
| | | | 0,0027" x 9" LFT x 1000ft | 70µm x 228mm LFT x 304m |
| | | | 0,0027" x 10" LFT x 1000ft | 70µm x 254mm LFT x 304m |
| | | | 0,0027" x 12" LFT x 1000ft | 70µm x 304mm LFT x 304m |



Dahlar® Release Bag 460

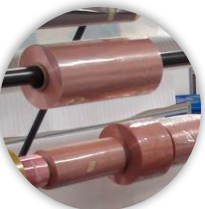
Self-Releasing Vac Film

| Maximum Use Temperature | Elongation | Tensile Strength | Roll Sizes (Inches) | Roll Sizes (Metric) |
|---|------------|------------------|----------------------------|-------------------------|
| 190°C | 425% | 60 MPa | 0,0027" x 2" LFT x 1000ft | 70µm x 51mm LFT x 304m |
| Description | | | 0,0027" x 2.5" LFT x 500ft | 70µm x 63mm LFT x 152m |
| <p>Dahlar® Release Bag 460 is a self releasing multi-layer bagging film for direct contact with prepreg for fabrication of hollow parts. It exhibits superior strength, temperature resistance and vacuum integrity of Airtech's multi-layer film technology. Dahlar® Release Bag 460 exhibits excellent release off epoxy resins.</p> <p>This product is also available in gusseted tubing (GT). Thanks to the gusset folding, Dahlar® Release Bag 460 is easier to position accurately in hollow parts. Upon application of pressure the bag will easily expand to fit to the shape of the part which is very useful in applications where there are variations in the part diameter. This development ensures even application of internal pressure in cases of small diameter parts, where the insertion of a standard lay flat tube bagging film can be problematic.</p> | | | 0,0027" x 3" LFT x 500ft | 70µm x 75mm LFT x 152m |
| | | | 0,0027" x 4" LFT x 1000ft | 70µm x 101mm LFT x 304m |
| | | | 0,0027" x 4" GT x 500ft | 70µm x 101mm GT x 152m |
| | | | 0,0027" x 5" LFT x 1000ft | 70µm x 127mm LFT x 304m |
| | | | 0,0027" x 5" GT x 500ft | 70µm x 127mm GT x 152m |
| | | | 0,0027" x 6" LFT x 1000ft | 70µm x 152mm LFT x 304m |
| | | | 0,0027" x 6" GT x 500ft | 70µm x 152mm GT x 152m |
| | | | 0,0027" x 8" LFT x 1000ft | 70µm x 203mm LFT x 304m |
| | | | 0,0027" x 8" GT x 500ft | 70µm x 203mm GT x 152m |



Ipplon® KM1300

| Maximum Use Temperature | Elongation | Tensile Strength | Roll Sizes (Inches) | Roll Sizes (Metric) |
|---|------------|------------------|---------------------------|-------------------------|
| 212°C | 450% | 48 MPa | 0,002" x 2" LFT x 500ft | 50µm x 51mm LFT x 152m |
| Description | | | 0,002" x 3" LFT x 500ft | 50µm x 75mm LFT x 152m |
| <p>Ipplon® KM1300 is a vacuum bagging film with a good elongation and is suitable for cure temperatures up to 212°C. It is recommended for bagging applications where a higher softness is required. An excellent film for autoclave use or resin infusion.</p> | | | 0,002" x 4" LFT x 500ft | 50µm x 101mm LFT x 152m |
| | | | 0,002" x 5" LFT x 500ft | 50µm x 127mm LFT x 152m |
| | | | 0,002" x 6" LFT x 500ft | 50µm x 152mm LFT x 152m |
| | | | 0,002" x 8" LFT x 1000ft | 50µm x 203mm LFT x 304m |
| | | | 0,002" x 10" LFT x 1000ft | 50µm x 254mm LFT x 304m |
| | | | 0,002" x 12" LFT x 1000ft | 50µm x 304mm LFT x 304m |
| | | | 0,002" x 18" LFT x 1000ft | 50µm x 457mm LFT x 304m |



Airdraw 2

Embossed Bagging Film

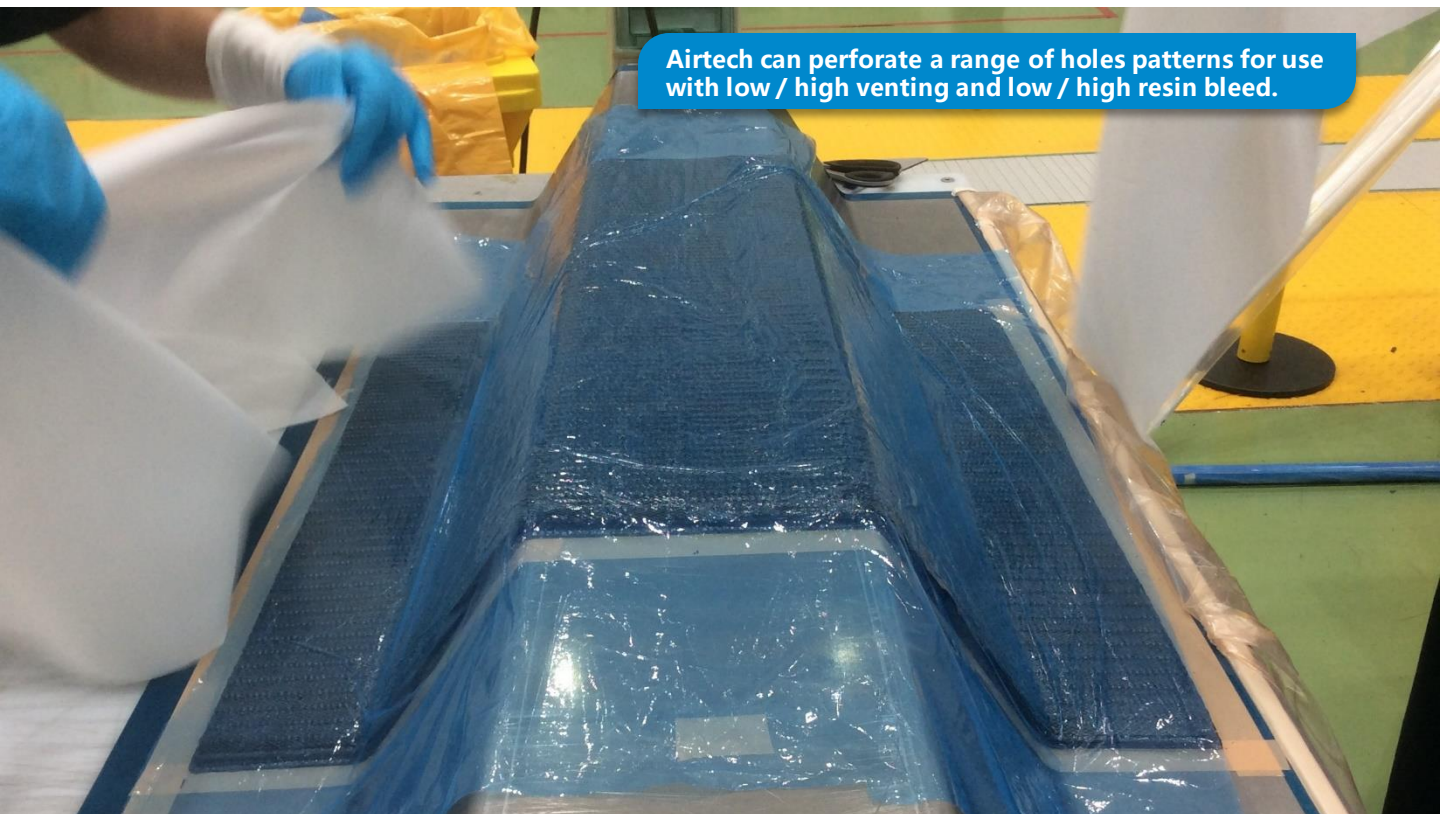
| Maximum Use Temperature | Elongation | Tensile Strength | Roll Sizes (Inches) | Roll Sizes (Metric) |
|--|------------|------------------|---------------------------|-------------------------|
| 121°C | 450% | 55 MPa | 0,003" x 60" SHT x 650ft | 75µm x 1,52m SHT x 198m |
| Description | | | 0,003" x 120" SHT x 650ft | 75µm x 3,05m SHT x 198m |
| <p>Airdraw 2 vacuum bagging film is embossed with a "cracked ice" pattern which allows for rapid air removal when placed under vacuum. The film has been formulated to provide increased stiffness to assist in maintaining a breathable pattern. Airdraw 2 is not affected by environmental conditions and will not soften in high humidity, allowing superior breathability. It is designed primarily for ply compaction with the added benefits of not requiring a breather. It is embossed from one side of the film, under close examination; the film has a flat side and a raised side. The outer surface of the roll is the raised side. For best results, place the raised side against the part surface on top of a perforated release film.</p> | | | 0,003" x 157" SHT x 650ft | 75µm x 3,99m SHT x 198m |



Release films



Airtech manufactures release films with fluoropolymers for high temperatures and polyolefins for lower temperature applications.



Airtech can perforate a range of holes patterns for use with low / high venting and low / high resin bleed.

Release films made for prepreg compaction and curing

Wrightlon® 3700

Low Cost Debulk Option

| Maximum Use Temperature | Elongation | Tensile Strength | Perforation Style | Roll Sizes (Inches) | Roll Sizes (Metric) |
|---|------------|------------------|-------------------|-----------------------|---------------------|
| 121°C | 500% | 30 MPa | | | |
| Description | | | WL3700 | 0,001" x 60" x 2000ft | 25µm x 1,52m x 609m |
| Wrightlon® 3700 is a release film that is designed for low cost applications. Wrightlon® 3700 will release from epoxy, polyester and vinyl ester resin systems. | | | WL3700 P3 | 0,001" x 60" x 2000ft | 25µm x 1,52m x 609m |
| | | | WL3700 P6 | 0,001" x 60" x 2000ft | 25µm x 1,52m x 609m |



Wrightlon® 3900

| Maximum Use Temperature | Elongation | Tensile Strength | Perforation Style | Roll Sizes (Inches) | Roll Sizes (Metric) |
|---|------------|------------------|-------------------|-----------------------|---------------------|
| 157°C | 500% | 41 MPa | | | |
| Description | | | WL 3900R | 0,0012" x 60" x 328ft | 30µm x 1,52m x 100m |
| Wrightlon® 3900 release film is a high elongation film which will exhibit excellent release properties from polyester, vinyl ester and epoxy resin systems. It will take temperature up to 157°C. | | | WL 3900R P3 | 0,0012" x 60" x 328ft | 30µm x 1,52m x 100m |
| | | | WL 3900R P6 | 0,0012" x 60" x 328ft | 30µm x 1,52m x 100m |



Dahlar® Release Bag 125

Low Cost Cure Option

| Maximum Use Temperature | Elongation | Tensile Strength | Perforation Style | Roll Sizes (Inches) | Roll Sizes (Metric) |
|---|------------|------------------|-------------------|-----------------------|---------------------|
| 140°C | 400% | 65 MPa | | | |
| Description | | | RBG125 | 0,001" x 60" x 1000ft | 25µm x 1,52m x 305m |
| Dahlar® Release Bag 125 is an economical film designed for release film applications. It can be used for cures up to 140°C and will release from most resins. This formulation has improved tear resistance and elongation. Dahlar® Release Bag 125 is the ideal release film for polyester or vinyl ester resins as well as epoxies and phenolics. | | | RBG125 P3 | 0,001" x 60" x 1000ft | 25µm x 1,52m x 305m |
| | | | RBG125 P6 | 0,001" x 60" x 1000ft | 25µm x 1,52m x 305m |



Wrightlon® 5200

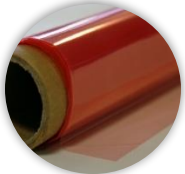
Best All-Rounder

| Maximum Use Temperature | Elongation | Tensile Strength | Perforation Style | Roll Sizes (Inches) | Roll Sizes (Metric) |
|---|------------|------------------|-------------------|------------------------|---------------------|
| 260°C | 350% | 48 MPa | | | |
| Description | | | WL5200B | 0,0006" x 48" x 1200ft | 15µm x 1,22m x 366m |
| Wrightlon® 5200 release film has an excellent elongation which ensures that it will conform to complex curvatures. It is capable of cure temperatures up to 260°C. This film will release from most resin systems and will provide a glossy finish when used directly on the laminate. Colour options: available in red, blue and yellow. | | | WL5200B P3 | 0,0006" x 48" x 1200ft | 15µm x 1,22m x 366m |
| | | | WL5200B P6 | 0,0006" x 48" x 1200ft | 15µm x 1,22m x 366m |
| | | | WL5200B | 0,0008" x 48" x 600ft | 20µm x 1,22m x 183m |
| | | | WL5200B P3 | 0,0008" x 48" x 600ft | 20µm x 1,22m x 183m |
| | | | WL5200B P6 | 0,0008" x 48" x 600ft | 20µm x 1,22m x 183m |



A4000

| Maximum Use Temperature | Elongation | Tensile Strength | Perforation Style | Roll Sizes (Inches) | Roll Sizes (Metric) |
|--|------------|------------------|-------------------|------------------------|---------------------|
| 260°C | 300% | 21 MPa | | | |
| Description | | | A4000R | 0,0005" x 60" x 1200ft | 12µm x 1,52m x 366m |
| A4000 release film is a high temperature and high elongation release film which will conform easily to the most complex curvatures. The film is capable of temperatures up to 260°C. This film will release from most resin systems and will provide a glossy finish when removed from the laminate. | | | A4000R | 0,0008" x 60" x 600ft | 20µm x 1,52m x 183m |
| | | | A4000R P3 | 0,0008" x 60" x 600ft | 20µm x 1,52m x 183m |
| | | | A4000R P6 | 0,0008" x 60" x 600ft | 20µm x 1,52m x 183m |



MR1 RED

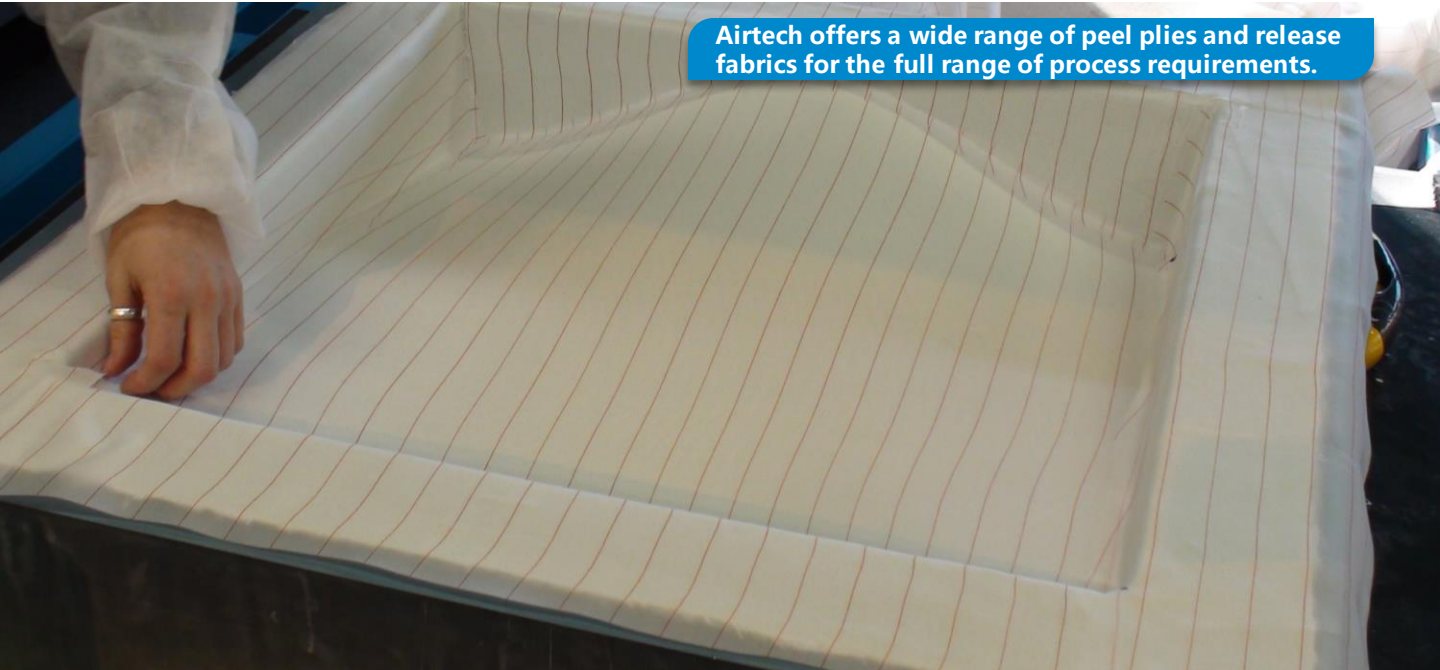
High Gloss Parts

| Maximum Use Temperature | Elongation | Tensile Strength | Perforation Style | Roll Sizes (Inches) | Roll Sizes (Metric) |
|--|------------|------------------|-------------------|----------------------|---------------------|
| 315°C | 400% | 31 MPa | | | |
| Description | | | MR1 RED | 0,001" x 48" x 500ft | 25µm x 1,22m x 152m |
| MR release films can take temperature up to 315°C. These films have a high elongation and a good conformability. This film will provide a smooth surface after the cure. | | | MR1 RED P3 | 0,001" x 48" x 500ft | 25µm x 1,22m x 152m |
| | | | MR1 RED P6 | 0,001" x 48" x 500ft | 25µm x 1,22m x 152m |

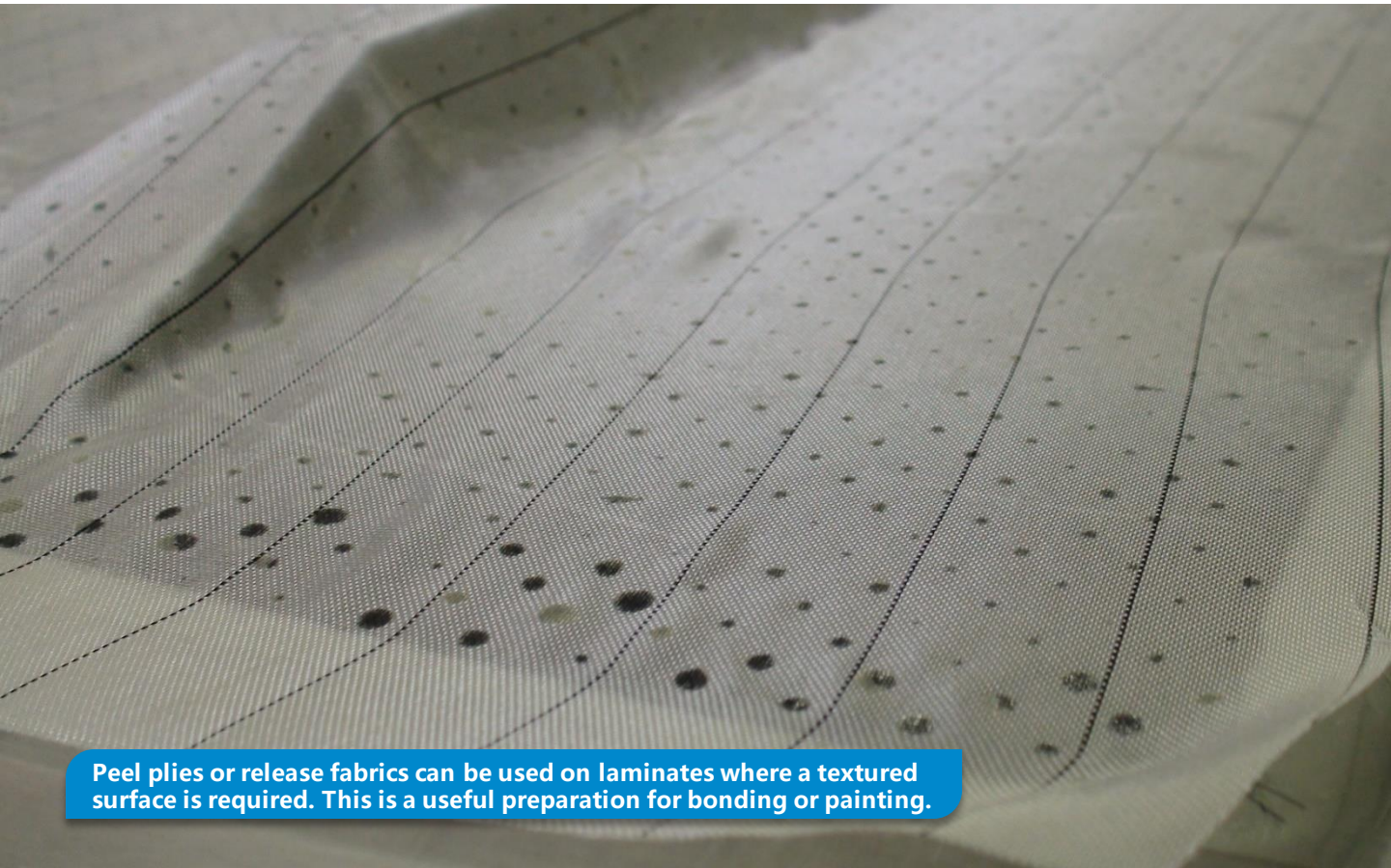


- Other products are available, please visit www.airtech.lu for full product selection.
- Other sizes and perforations are available on special order, please contact your Airtech customer service representative for complete details.
- Material can be slit in special widths upon request (1 standard roll as minimum order quantity).

Release fabrics & Peel ply



Airtech offers a wide range of peel plies and release fabrics for the full range of process requirements.



Peel plies or release fabrics can be used on laminates where a textured surface is required. This is a useful preparation for bonding or painting.

Uncoated & coated release fabrics for paint & bonding preparation

Econostitch® G

| Maximum Use Temperature | Fibre Type | Weight | Colour | Roll Sizes (Inches) | Roll Sizes (Metric) |
|---|------------|---------------------|----------------------|---------------------|---------------------|
| 190°C | Polyester | 85 g/m ² | White / Black Tracer | | |
| Description | | | | 2" x 218 yards | 50mm x 200m |
| <p>Econostitch® G is an economical peel ply with good performance when used with both polyester and epoxy resins. It has black tracers with high visibility to reduce the risk of peel ply being left on the part. Our Econo peel plies are designed to work in resin infusion or hand lay-up processes. Econostitch® G assists or eliminates the need for sanding or abrading on your composite laminate.</p> <p>Note: Slit width sizes are available but may be subject to minimum order quantity and lead time, please contact for details.</p> | | | | 4" x 218 yards | 100mm x 200m |
| | | | | 8" x 218 yards | 200mm x 200m |
| | | | | 20" x 218 yards | 500mm x 200m |
| | | | | 35" x 218 yards | 900mm x 200m |
| | | | | 71" x 218 yards | 1,80m x 200m |



Econostitch®

Workshop Essential

| Maximum Use Temperature | Fibre Type | Weight | Colour | Roll Sizes (Inches) | Roll Sizes (Metric) |
|--|------------|---------------------|--------------------|---------------------|---------------------|
| 190°C | Nylon | 88 g/m ² | White / Red Tracer | | |
| Description | | | | 2" x 218 yards | 50mm x 200m |
| <p>Econostitch® is a heat set and scoured nylon peel ply with red tracers which make this peel ply more visible before and after a cure, reducing the possibility of the peel ply being left on the part. Our Econo peel plies are designed to work in resin infusion or hand lay-up processes. Econostitch® assists or eliminates the need for sanding or abrading on your composite laminate.</p> <p>Note: Slit width sizes are available but may be subject to minimum order quantity and lead time, please contact for details.</p> | | | | 4" x 100 yards | 100mm x 91m |
| | | | | 8" x 100 yards | 200mm x 91m |
| | | | | 20" x 100 yards | 500mm x 91m |
| | | | | 30" x 100 yards | 750mm x 91m |
| | | | | 60" x 100 yards | 1,52m x 91m |
| | | | | 60" x 300 yards | 1,52m x 274m |



Bleeder Lease® B

| Maximum Use Temperature | Fibre Type | Weight | Colour | Roll Sizes (Inches) | Roll Sizes (Metric) |
|---|------------|---------------------|--------|---------------------|---------------------|
| 232°C | Nylon | 62 g/m ² | Green | | |
| Description | | | | 60" x 109 yards | 1,52m x 100m |
| <p>Bleeder Lease® B peel ply is a high temperature fabric coated with a silicone release agent. It provides superior release to plain peel plies because the coating prevents the fabric from bonding to the laminate while producing a textured surface. It will provide easy release from most prepregs and resin systems. All coated peel plies have the potential to transfer. Bleeder Lease® B is a tightly woven, coated nylon peel ply that releases well from most resin systems. It is an excellent choice for many resin infusion projects.</p> | | | | | |



Release Ease® 234 TFP

Porous PTFE Glass

| Maximum Use Temperature | Fibre Type | Thickness | Colour | Roll Sizes (Inches) | Roll Sizes (Metric) |
|--|------------------------|-----------|--------|---------------------|---------------------|
| 288°C | PTFE coated fibreglass | 60µm | Brown | | |
| Description | | | | 39" x 109 yards | 1m x 100m |
| <p>Release Ease® PTFE coated fibreglass fabrics will provide release from all conventional resin systems. Porous products will allow excess resin, volatiles and trapped air to escape into the breather during cure while non-porous products will retain resin. Release Ease® products have a continuous service temperature to 288°C.</p> | | | | 60" x 100 yards | 1,52m x 91m |



Release Ease® 234 TFNP

Non-Porous PTFE Glass

| Maximum Use Temperature | Fibre Type | Weight | Colour | Roll Sizes (Inches) | Roll Sizes (Metric) |
|-------------------------|------------------------|--------|--------|---------------------|---------------------|
| 288°C | PTFE coated fibreglass | 75µm | Brown | | |
| Description | | | | 39" x 109 yards | 1m x 100m |

Release Ease® 234 TFNP is a non-porous glass fabric. Release Ease® PTFE coated fibreglass fabrics will provide release from all conventional resin systems. Porous products will allow excess resin, volatiles and trapped air to escape into the breather during cure while non-porous products will retain resin. Release Ease® products have a continuous service temperature to 288°C.



Breathers & Bleeders

Airweave® N3

| Maximum Use Temperature | Fibre Type | Weight | Roll Sizes (Inches) | Roll Sizes (Metric) |
|-------------------------|------------|----------------------|---------------------|---------------------|
| 204°C | Polyester | 125 g/m ² | | |
| Description | | | 60" x 109 yards | 1,52m x 100m |

Airweave® N3 is a polyester non-woven breather and absorption fabric designed primarily for use when moulding with vacuum pressure only. It is recommended for use when moulding components with small surface area and without complex curvatures which could result in stretching of the breather fabric, causing a reduction in airflow capability.

30" x 109 yards
760mm x 100m



Airweave® N4 Light weight breather

Workshop Essential

| Maximum Use Temperature | Fibre Type | Weight | Roll Sizes (Inches) | Roll Sizes (Metric) |
|-------------------------|------------|----------------------|---------------------|---------------------|
| 204°C | Polyester | 140 g/m ² | | |
| Description | | | 60" x 55 yards | 1,52m x 50m |

Airweave® N4 is a good breather for low pressure cures. It conforms well and can be used as a bleeder at any pressure.

60" x 109 yards
760mm x 100m
30" x 109 yards
760mm x 100m



Airweave® N7

| Maximum Use Temperature | Fibre Type | Weight | Roll Sizes (Inches) | Roll Sizes (Metric) |
|-------------------------|------------|----------------------|---------------------|---------------------|
| 204°C | Polyester | 237 g/m ² | | |
| Description | | | 60" x 55 yards | 1,52m x 50m |

Airweave® N7 is a medium weight breather which provides good conformity.



Polyester breathers are good for bleeding excess resin, oven curing and standard autoclave cures.

Non-woven fabrics to apply vacuum, pressure and absorb excess resin



Airtech manufactures a breather range of different weights and fibre types for low cost and high performance applications.

Airweave® N10 Heavy weight breather

Workshop Essential

| Maximum Use Temperature | Fibre Type | Weight | Roll Sizes (Inches) | Roll Sizes (Metric) |
|---|------------|----------------------|---------------------|---------------------|
| 204°C | Polyester | 339 g/m ² | 4" x 55 yards | 100mm x 50m |
| Description | | | 12" x 55 yards | 300mm x 50m |
| Airweave® N10 is used for higher pressure cures. This breather still offers good elongation and cushions any sharp radius for vacuum bag protection. Non-woven construction provides good conformity. | | | 30" x 55 yards | 760mm x 50m |
| | | | 60" x 55 yards | 1,52m x 50m |



Airweave® supplied in slit width rolls



Breathers supplied pre-cut for volume manufacturing

Breathers & Bleeders

Ultraweave® 406 Light weight breather

| Maximum Use Temperature | Fibre Type | Weight | Roll Sizes (Inches) | Roll Sizes (Metric) |
|-------------------------|------------|----------------------|---------------------|---------------------|
| 232°C | Nylon 6,6 | 135 g/m ² | 60" x 50 yards | 1,52m x 46m |
| Description | | | | |

All Ultraweave® products have a higher temperature softening point and will not compress like polyester allowing for increased airflow. Ultraweave® 406 is the lightest, most conformable and least expensive nylon breather in the Ultraweave® family.



Ultraweave® 606

Softness High Pressure Breather

| Maximum Use Temperature | Fibre Type | Weight | Roll Sizes (Inches) | Roll Sizes (Metric) |
|-------------------------|------------|----------------------|---------------------------------|----------------------------|
| 232°C | Nylon 6,6 | 204 g/m ² | 4" x 55 yards 60" x 55 yards | 100mm x 50m 1,52m x 50m |
| Description | | | | |

All Ultraweave® products have a higher temperature softening point and will not compress like polyester allowing for increased airflow. Ultraweave® 606 is a medium weight yet conformable breather which replaces most 340 g/m² polyester breathers, reducing back pressure and porosity problems.



Ultraweave® 1032 Heavy weight breather

#1 Long Cure Breather

| Maximum Use Temperature | Fibre Type | Weight | Roll Sizes (Inches) | Roll Sizes (Metric) |
|-------------------------|------------|----------------------|----------------------------------|----------------------------|
| 232°C | Nylon 6,6 | 339 g/m ² | 30" x 55 yards 60" x 55 yards | 760mm x 50m 1,52m x 50m |
| Description | | | | |

Ultraweave® 1032 is a heavy duty yet conformable breather which will work with most any autoclave cure and prevent trap off under the vacuum bag. This product eliminates the need for multiple layers of polyester breather.

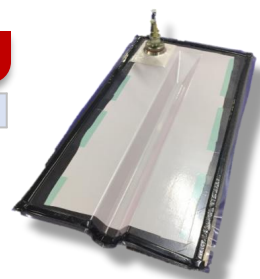


Stretch Flow 2000

Highest Elongation

| Maximum Use Temperature | Fibre Type | Weight | Roll Sizes (Inches) | Roll Sizes (Metric) |
|-------------------------|------------|-----------------------|---------------------|---------------------|
| 232°C | Nylon | 91,5 g/m ² | 59" x 100 yards | 1,49m x 91 m |
| Description | | | | |

Stretch Flow 2000 is a knitted, nylon, stretchable breather used in a variety of applications. The high-stretch characteristics of Stretch Flow 2000 enable it to conform to many complex contour surfaces.



Stretch Flow 2000 with NO BRIDGING on complex panel shape.

Breather & bleeders fabrics

BHT 20

Big Time Saver

| Maximum Use Temperature | Carrier Type | Adhesive Type | Roll Sizes (Inches) | Roll Sizes (Metric) |
|-------------------------|--------------|---------------|---------------------|---------------------|
| 180°C | Nylon | Acrylic | 1" x 27 yards | 25mm x 25m |
| Description | | | | |

BHT 20 is an adhesive backed nylon hook tape which can be used to secure and hold non-woven breather fabrics onto both metallic and composite tooling.



Airpath MD

| Maximum Use Temperature | Fibre Type | Configuration of Net | Roll Sizes (Inches) | Roll Sizes (Metric) |
|-------------------------|------------|----------------------|---------------------|---------------------|
| 204°C | Polyester | Braided tube | 1"-2" x 250 feet | 25-50mm x 76m |
| Description | | | | |

Airpath MD is a tough lightweight braided sleeve. The open weave construction provides excellent airflow when used as an edge breather.



TFG 660 P2

| Maximum Use Temperature | Fibre Type | Weight | Roll Sizes (Inches) | Roll Sizes (Metric) |
|-------------------------|------------------------|----------------------|---------------------|---------------------|
| 260°C | PTFE coated fibreglass | 530 g/m ² | 39" x 109 yards | 1m x 100m |
| Description | | | | |

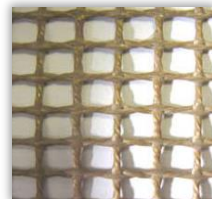
TFG 660 P2 is an open mesh PTFE coated woven glass fabric which has a plain weave structure. TFG 660 P2 has excellent chemical and heat resistance properties and can be used in a variety of composite applications.



TFG 950 P2

| Maximum Use Temperature | Fibre Type | Weight | Roll Sizes (Inches) | Roll Sizes (Metric) |
|-------------------------|------------------------|----------------------|---------------------|---------------------|
| 260°C | PTFE coated fibreglass | 460 g/m ² | 39" x 33 yards | 1m x 30m |
| Description | | | | |

TFG 950 P2 is an open mesh PTFE coated woven glass fabric which has a plain weave structure. TFG 950 P2 has excellent chemical and heat resistance properties and can be used in a variety of composite applications.



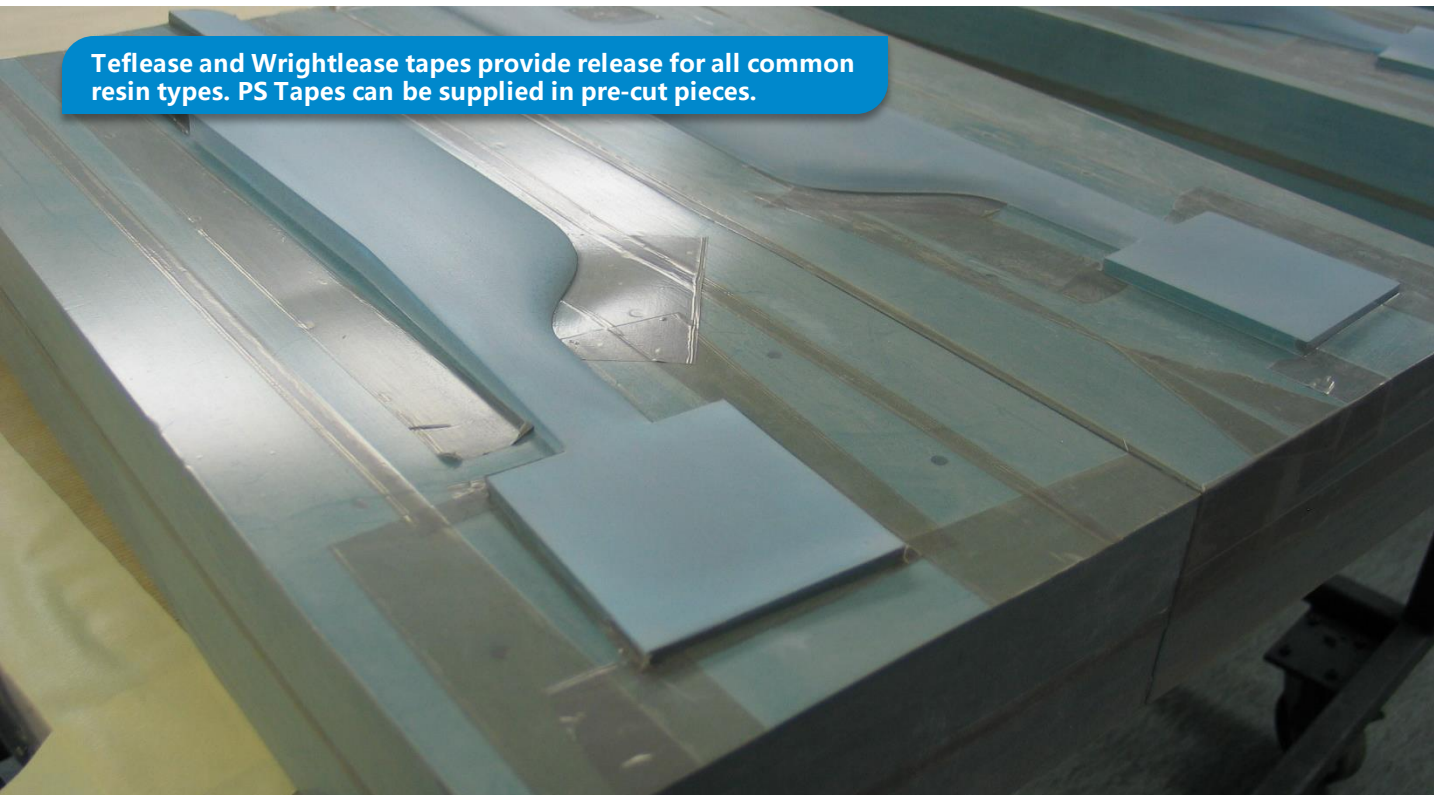
Ultraweave® Breathers supplied in slit width rolls.

Pressure sensitive tapes

Tapes are a cost effective and convenient method for protecting mould from resin flash, holding, fixing, providing release and general purpose applications.



Teflease and Wrightlease tapes provide release for all common resin types. PS Tapes can be supplied in pre-cut pieces.



Tapes for holding, fixing, masking, releasing and protecting

EconoTape 1

Low Cost Tape

| Maximum Use Temperature | Carrier Type | Adhesive Type | Colour | Roll Sizes (Inches) | Roll Sizes (Metric) |
|-------------------------|--------------|---------------|--------|--------------------------------|--------------------------|
| 177°C | Polyester | Silicone | Green | 1" x 72 yards 2" x 72 yards | 25mm x 66m 50mm x 66m |

Description

EconoTape 1 is an inexpensive, multipurpose, silicone based adhesive, pressure sensitive tape. This tape can be used for holding down vacuum bagging materials, thermocouples, and other lay-up items. EconoTape 1 can be used for room temperature to 177°C applications.



Flashbreaker® 1

| Maximum Use Temperature | Carrier Type | Adhesive Type | Colour | Roll Sizes (Inches) | Roll Sizes (Metric) |
|-------------------------|--------------|---------------|----------------|--------------------------------|--------------------------|
| 204°C | Polyester | Silicone | Blue or Orange | 1" x 72 yards 2" x 72 yards | 25mm x 66m 50mm x 66m |

Description

Flashbreaker® tapes are high strength polyester films coated with a silicone adhesive for multi-purpose functions such as holding down vacuum bagging materials. Flashbreaker® tapes remove easily after cure. The orange Flashbreaker® tapes have high visibility when placed on parts and moulds. Available in cut strips version of tape on a liner, 1" x 2".



Wrightlease 2

Workshop Essential

| Maximum Use Temperature | Carrier Type | Adhesive Type | Colour | Roll Sizes (Inches) | Roll Sizes (Metric) |
|-------------------------|---------------|---------------|--------|--------------------------------|--------------------------|
| 260°C | Fluoropolymer | Silicone | Orange | 1" x 36 yards 2" x 36 yards | 25mm x 33m 50mm x 33m |

Description

Wrightlease is a non-stick tape for applications where resin release is required. The orange colour is highly visible on most substrates in addition to offering high elongation and tensile strength. Wrightlease 2 has 0,002" thick film and is a low cost non-stick tape solution. Available in cut strips version of tape on a liner, 1" x 2".



Wrightlease 4

Strongest Release Tape

| Maximum Use Temperature | Carrier Type | Adhesive Type | Colour | Roll Sizes (Inches) | Roll Sizes (Metric) |
|-------------------------|---------------|---------------|--------|--------------------------------|--------------------------|
| 260°C | Fluoropolymer | Silicone | Orange | 1" x 36 yards 2" x 36 yards | 25mm x 33m 50mm x 33m |

Description

Wrightlease is a non-stick tape for applications where resin release is required. The orange colour is highly visible on most substrates in addition to offering high elongation and tensile strength. Wrightlease 4 has 0,004" thick film and is stronger and tougher and is a low cost non-stick tape solution for demanding applications. Available in cut strips version of tape on a liner, 1" x 2".



Teflease MG2

| Maximum Use Temperature | Carrier Type | Adhesive Type | Colour | Roll Sizes (Inches) | Roll Sizes (Metric) |
|-------------------------|--------------|---------------|--------|---|---|
| 260°C | PTFE | Silicone | Brown | 1/2" x 36 yards 5/8" x 36 yards 3/4" x 36 yards 1" x 36 yards 1 1/2" x 36 yards 2" x 36 yards 4" x 36 yards | 12mm x 33m 15mm x 33m 19mm x 33m 25mm x 33m 38mm x 33m 50mm x 33m 100mm x 33m |

Description

Teflease MG2 is a PTFE film coated with a silicone adhesive. It is ideal for use on tooling blocks and all areas where high elongation and release is needed. Teflease MG tapes will form to critical contours and mould surfaces while offering multiple releases or may be used to cover multiple detail mould seams.



Airhold 1 CBS

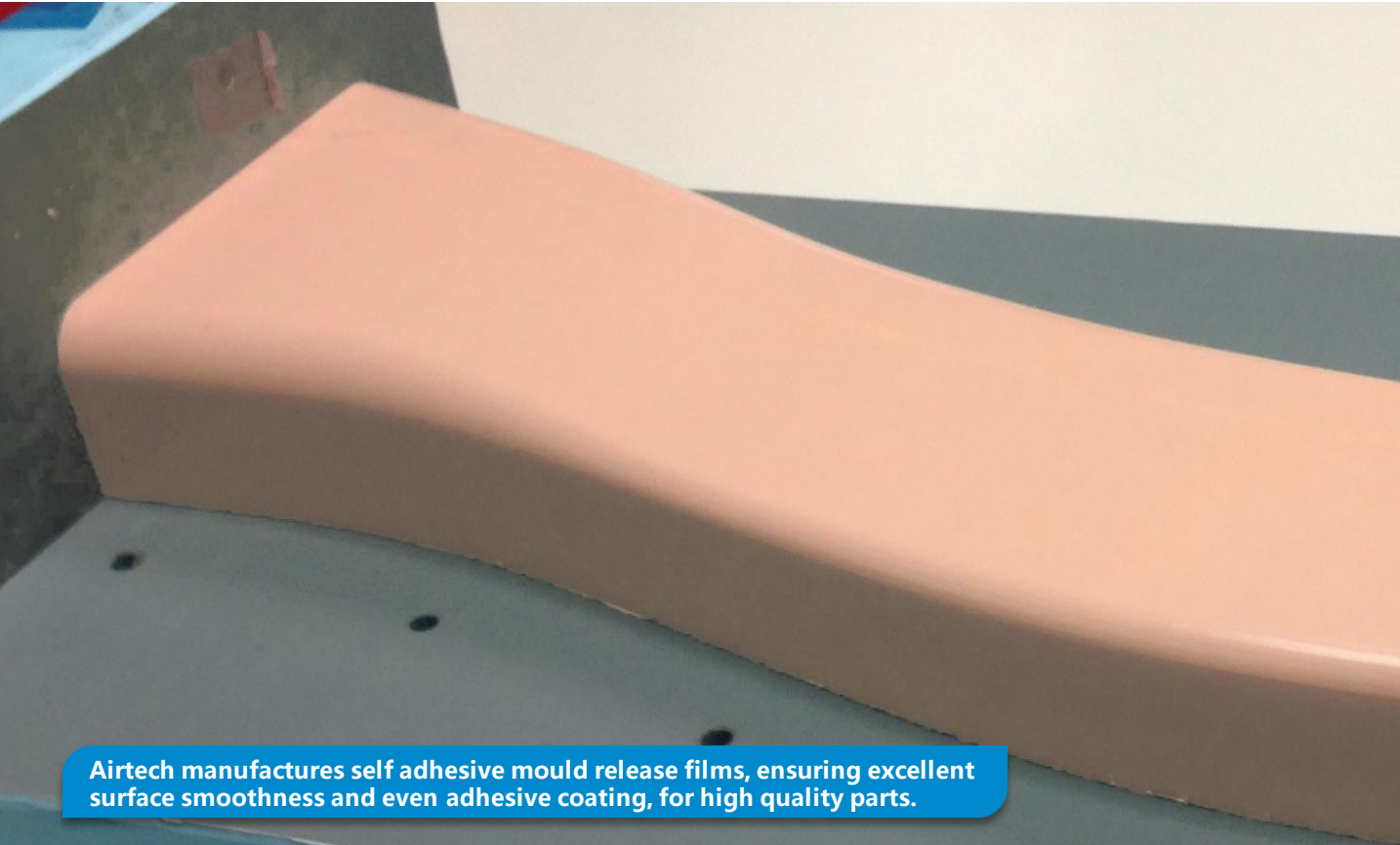
| Maximum Use Temperature | Carrier Type | Adhesive Type | Colour | Roll Sizes (Inches) | Roll Sizes (Metric) |
|-------------------------|--------------|---------------|--------|--------------------------------|--------------------------|
| 204°C | Polyester | Acrylic | White | 1" x 36 yards 2" x 36 yards | 25mm x 33m 50mm x 33m |

Description

Airhold 1 CBS is a double-sided fabric reinforced tape with a rubber based adhesive on both sides. It can also be used to hold breather in place on the backside of mould for envelope bagging applications.



Mould release



Non-liquid release materials for patterns & moulds

Tooltec® A005

| Maximum Use Temperature | Fabric | Adhesive | Total Thickness | Roll Sizes (Inches) | Roll Sizes (Metric) |
|-------------------------|-----------------------------|----------|-----------------|---------------------|---------------------|
| 260°C | 75µm PTFE coated fibreglass | Silicone | 125µm | | |

Description

Tooltec® A005 pressure sensitive tape is designed to adhere to tool surfaces providing semi-permanent release and a reconditioned surface. It can be used on all types of moulds, press platens, caul sheets or any surface that comes in contact with resins or adhesives. Release agents are not required on the mould surface thereby reducing cost and parts contamination. Tooltec® A005 is a reinforced mould surface reconditioning tape providing a semi-permanent release for flat tools. This product comes standard with a silicone pressure adhesive, but can also be supplied with an acrylic adhesive by special order.

| | |
|----------------|---------------|
| 1" x 36 yards | 25mm x 33m |
| 2" x 36 yards | 50mm x 33m |
| 39" x 18 yards | 1,00m x 16,5m |
| 48" x 18 yards | 1,22m x 16,5m |
| 59" x 18 yards | 1,5m x 16,5m |



Tooltec® A007

Hard Wearing Option

| Maximum Use Temperature | Fibre Type | Adhesive | Total Thickness | Roll Sizes (Inches) | Roll Sizes (Metric) |
|-------------------------|------------------------------|----------|-----------------|---------------------|---------------------|
| 260°C | 125µm PTFE coated fibreglass | Silicone | 175µm | | |

Description

Tooltec® A007 pressure sensitive tape is designed to adhere to tool surfaces providing semi-permanent release and a reconditioned surface. It can be used on all types of moulds, press platens, caul sheets or any surface that comes in contact with resins or adhesives. Release agents are not required on the mould surface thereby reducing cost and parts contamination. Tooltec® A007 is a reinforced mould surface reconditioning tape providing a semi-permanent release for flat tools. This product comes standard with a silicone pressure adhesive, but can also be supplied with an acrylic adhesive by special order.

| | |
|----------------|---------------|
| 1" x 36 yards | 25mm x 33m |
| 39" x 18 yards | 1,00m x 16,5m |
| 48" x 18 yards | 1,22m x 16,5m |



Toolwright 3

Low Cost Release

| Maximum Use Temperature | Fibre Type | Adhesive | Total Thickness | Roll Sizes (Inches) | Roll Sizes (Metric) |
|-------------------------|-----------------------------|----------|-----------------|---------------------|---------------------|
| 260°C | 50µm extruded fluoropolymer | Silicone | 75µm | | |

Description

Toolwright 3 is an extruded fluoropolymer film coated with silicone pressure sensitive adhesive. Toolwright 3 has a thinner film than Toolwright 5 version and can be more easily applied over complex contour surfaces. Toolwright 3 has high elongation, good tear strength, high temperature resistance and excellent clean up after removal.

| | |
|----------------|---------------|
| 50" x 18 yards | 1,27m x 16,5m |
|----------------|---------------|



Toolwright 5

| Maximum Use Temperature | Fibre Type | Adhesive | Total Thickness | Roll Sizes (Inches) | Roll Sizes (Metric) |
|-------------------------|------------------------|----------|-----------------|---------------------|---------------------|
| 260°C | Extruded Fluoropolymer | Silicone | 125µm | | |

Description

Toolwright 5 is an extruded fluoropolymer film coated with silicone pressure sensitive adhesive. The orange colour is highly visible on most substrates in addition to offering high elongation and tensile strength.

| | |
|----------------|---------------|
| 46" x 18 yards | 1,17m x 16,5m |
|----------------|---------------|



Tooltec® CS5

Super Gloss Finish

| Maximum Use Temperature | Fibre Type | Adhesive | Total Thickness | Roll Sizes (Inches) | Roll Sizes (Metric) |
|-------------------------|------------|----------|-----------------|---------------------|---------------------|
| 260°C | PTFE | Silicone | 165µm | | |

Description

Tooltec® CS5 is a PTFE film coated with a high temperature silicone pressure sensitive adhesive. It can be used to seal masters and leaky tool surfaces while providing semi-permanent and contamination free part release. Tooltec® CS5 is a non-reinforced mould surface reconditioning tape allowing conformance to complex contours and providing a semi-permanent release for contoured shapes.

| | |
|----------------|---------------|
| 4" x 18 yards | 100mm x 16,5m |
| 39" x 18 yards | 1,00m x 16,5m |
| 48" x 18 yards | 1,22m x 16,5m |

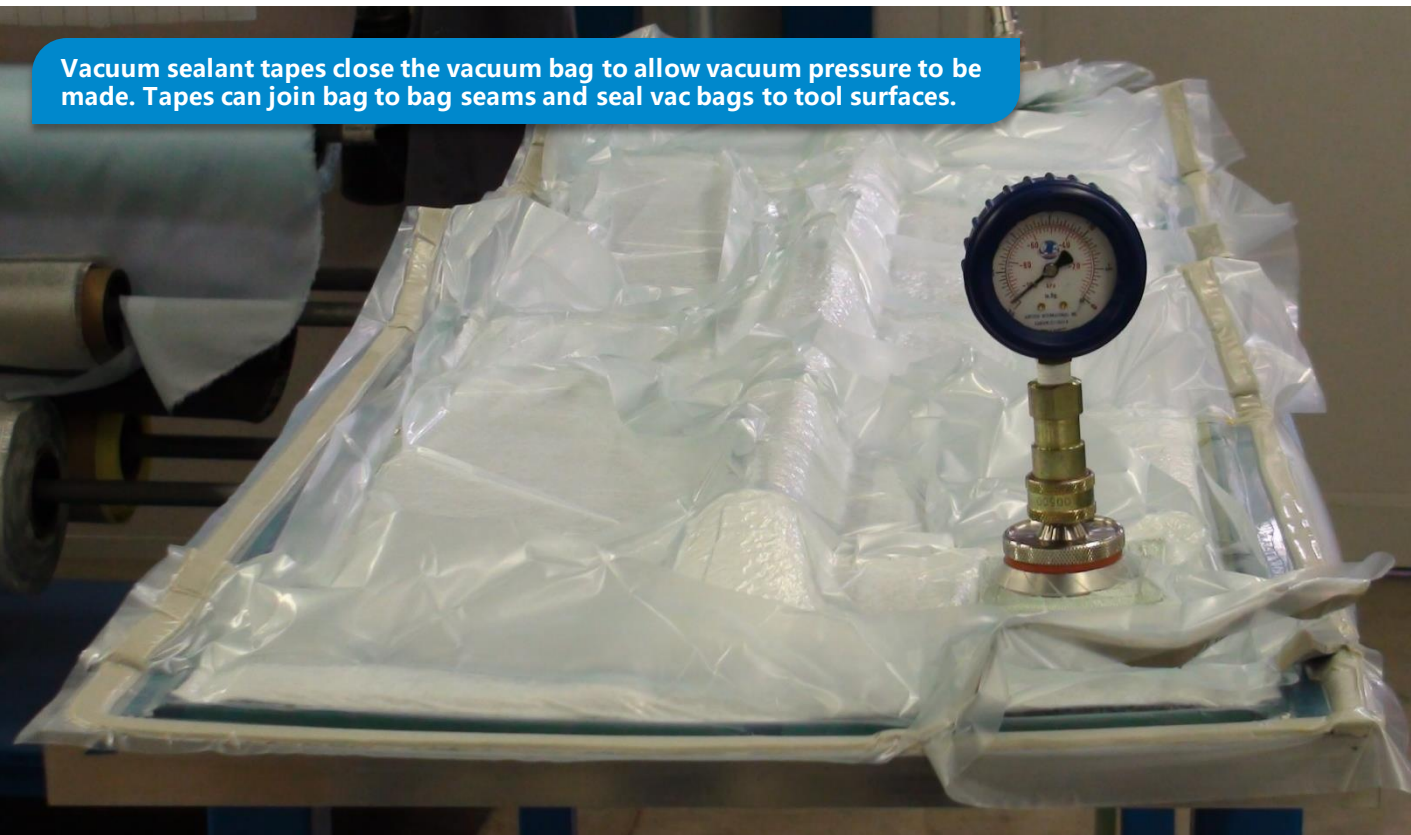


- Other products are available, please visit www.airtech.lu for full product selection.
- Other sizes are available on special order, please contact your Airtech customer service representative for complete details.

Vacuum bag sealant tapes



Low cost sealant tapes manufactured for economic debulking, oven cure & autoclave curing.



Vacuum sealant tapes close the vacuum bag to allow vacuum pressure to be made. Tapes can join bag to bag seams and seal vac bags to tool surfaces.

Sealing vacuum bags to tools & sealing around tubing connections

AS1

Low Cost Tape

| Maximum Use Temperature | Colour | Base Material | Tack Level | Roll Sizes |
|-------------------------|--------|------------------|------------|------------|
| 120°C | Black | Synthetic rubber | Good tack | |

Description 3mm x 12mm x 15m

AS1 is an economical multi-purpose sealant tape with high tack. It removes easily from metal or composite tools. Suitable for cure applications up to 120°C.



Airseal 2T

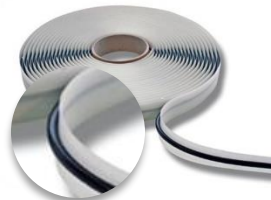
Workshop Essential

| Maximum Use Temperature | Colour | Base Material | Tack Level | Roll Sizes |
|---------------------------------------|--------|------------------|------------|------------|
| 150°C bag to tool 180°C bag to bag | Black | Synthetic rubber | High tack | |

Description 3mm x 12mm x 15m

Airseal 2T is a cost effective vacuum bag sealant tape for room and medium temperature applications. Airseal 2T has excellent tack, firm feel, good clean-up and long shelf life. It can also be used for higher temperature envelope bag applications. Airseal 2 Tacky has superior tack for colder environments.

3mm x 9mm x 15m
 2mm x 10mm x 20m
 2mm x 7mm x 20m
 Ø 4mm bead x 7,5m



AT-200Y

| Maximum Use Temperature | Colour | Base Material | Tack Level | Roll Sizes |
|-------------------------|--------|------------------|------------|------------|
| 204°C | Yellow | Synthetic rubber | High tack | |

Description 3mm x 12mm x 7,6m

AT-200Y is an economical multi-purpose sealant tape with high tack. It removes easily from metal or composite tools. It is suitable for cure applications up to 204°C.



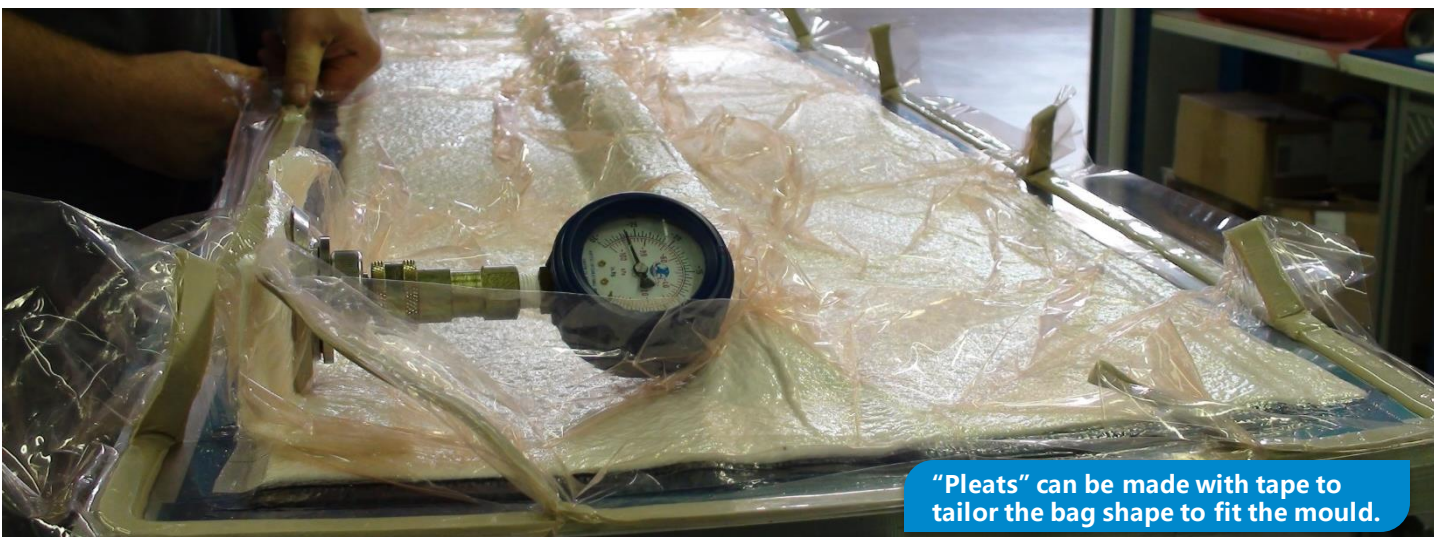
GS-213

| Maximum Use Temperature | Colour | Base Material | Tack Level | Roll Sizes |
|-------------------------|-----------|------------------|------------|------------|
| 204°C | Off-white | Synthetic rubber | Good tack | |

Description 3mm x 12mm x 7,6m

GS-213 is recognized worldwide as the work horse for the composites and bonding industries. It has excellent tack, great clean-up, and is usable up to 204°C.

3mm x 19mm x 7,6m



"Pleats" can be made with tape to tailor the bag shape to fit the mould.

Vacuum valves & hoses

Multi-Valve MV407 in bag pleat, with VacPad.



Vac Valve 509

Best Low Cost Option

| Maximum Use Temperature | Material | Size |
|-------------------------|---|------|
| 260°C | Aluminium base plate & carbon steel top piece | |
| Description | | |

Vac Valve 509 is a 2 piece vacuum valve which perforates the bagging film when the top piece is inserted and threaded into the base plate. The specific design of the threaded connection eliminates the need to cut the bagging film prior to inserting the top piece. Note: Can be supplied assembled with AQD500 Plug.

Ø 50 mm Base Diameter
1/4" NPT threaded fitting



Vac Valve 401C

| Maximum Use Temperature | Material | Size |
|-------------------------|----------------|------|
| 260°C | Cast aluminium | |
| Description | | |

Vac Valve 401C is a twist lock through bag connector designed to work with our AQD 500TF quick disconnects. In combination with our AQD 500 quick disconnects. Note: Can be supplied assembled with AQD500 Plug.

Ø 63 mm Base Diameter
1/4" Male NPT



Premium Multi-Valve 407

Leak Free Longest Life

| Maximum Use Temperature | Material | Size |
|-------------------------|-----------------|------|
| 260°C | Stainless steel | |
| Description | | |

The solid body design of the Premium Multi-Valve 407 combines the male quick disconnect and thru-bag connector, eliminating threaded connections and potential leak paths. Robust stainless steel construction ensures corrosion resistance and long life. High temperature O-ring and platinum cured silicone gasket give a long service life. It is fully compatible with 3/4" ISO-B "Hansen" style quick-disconnects. The valve mechanism and O-ring seals can easily be replaced to extend life.

Ø 60 mm Base Diameter
1/4 inch



AQD 500TF Quick Disconnect Plug & Socket

Clean Room Essential

| Maximum Use Temperature | Material | Size |
|-------------------------|--------------|------|
| 260°C | Carbon steel | |
| Description | | |

The AQD 500TF quick disconnect couplings are made of high carbon steel that have been plated to halt oxidation. The couplings have internal valves so when disconnected the airflow is shut off in both plug and socket. This means your vacuum bag holds vacuum even after the vacuum hose has been disconnected.

1/4" NPT



For workshop, oven & autoclave

Airflow 60R

Clean Room Essential

| Maximum Use Temperature | Material | Thread Size | Hose Length |
|-------------------------|-------------------------|-------------------|---------------------|
| 232°C | Silicone rubber / steel | 1/4 inch male NPT | Up to 10m (33 feet) |
| Description | | | |

Airflow 60R can be used as an autoclave or oven hose. The outer ply is silicone rubber over a flexible steel spiral. There are no wire braids to puncture the rubber jacket or the vacuum bag. The hose is supported by a flexible stainless steel spiral that prevents collapse under autoclave pressure. The bell shaped ferrule prevents hose lacerations at fitting ends extending hose life. Due to its unique construction Airflow 60R hose has the advantage that is easy to repair by replacing the damaged parts like the end fittings. For more information about Airflow 60R repair kit please contact your Airtech sales representative.



Airflow 65R

Best All-Rounder

| Maximum Use Temperature | Material | Thread Size | Hose Length |
|-------------------------|---|-------------------|----------------------|
| 232°C | Silicone rubber / Interlocking steel tube | 1/4 inch male NPT | Up to 30m (100 feet) |
| Description | | | |

Airflow 65R can be used as an autoclave or oven hose. The outer ply is silicone rubber that encases a flexible steel tube that prevents collapse and hose separation. The bell-shaped ferrule helps prevent hose lacerations at fitting ends extending hose life. Note: Can be supplied assembled with AQD500 sockets on each end.



Airflow 100R

| Maximum Use Temperature | Material | Thread Size | Hose Length |
|-------------------------|-------------------------|-------------------|----------------------|
| 260°C | Silicone rubber / steel | 1/4 inch male NPT | Up to 30m (100 feet) |
| Description | | | |

Airflow 100R is a durable high temperature and high pressure autoclave hose with the addition of a silicone rubber outer protective sleeve. The hose construction consists of a braided steel outer covering a PTFE inner tube supported with a flexible steel spring conduit. Its unique design prevents collapse from vacuum or autoclave pressures.



Airflow 65R connected to VacView.



- Elbows can reduce stress on hose & bags reducing risk of hose leaks & bag failures.

Leak detection & lay-up tools

Vac-Gauge 30

Low Cost Gauge

| Assembly Style | Range | Screw Thread |
|----------------|-----------------------------|--------------|
| Screwed | 0 - 30 in. Hg (0 - 100 KPa) | |
| Description | | |

Vac-Gauge 30 is our durable, inexpensive vacuum gauge used to determine how much vacuum is under your vacuum bag. A heavy ridged blue rubber jacket protects the gauge from damage in normal shop use. The Vac-Gauge 30 stem is a 1/4 inch male NPT fitting that fits easily into our AQD quick disconnects.

Note: Can be supplied assembled with AQD500 Socket.

1/4 inch male NPT



Vac-Gauge 40D

Clean Room Essential

| Assembly Style | Range | Screw Thread |
|----------------|-----------------------------|--------------|
| Screwed | 0 - 30 in. Hg (0 - 100 KPa) | |
| Description | | |

Vac-Gauge 40D is a versatile digital vacuum gauge used for leak detection and vacuum determinations under your vacuum bag. The gauge offers vacuum readings in four selectable units: mBar, mmHg, inHg, and KPa. A heavy duty rubber jacket protects the gauge from damage in normal shop use. The Vac-Gauge 40D connection stem is a 1/4-18 inch NPT thread fitting that fits easily into our AQD quick disconnects.

Note: Can be supplied assembled with AQD 500TF socket

1/4 inch male NPT



Vac Saver HT

| Service Temperature | Material Type | Material Type Seals | Screw Thread |
|---------------------|--------------------|---------------------|--------------|
| 200°C | Anodized aluminium | Fluorocarbon | |
| Description | | | |

Vac Saver HT is a one way check valve used to protect vacuum bagged parts against vacuum loss. Vac Saver HT protects against back pressure when multiple lines are connected to a single vacuum source. In case of a vacuum loss in a part which is connected to the same vacuum source, the Vac Saver HT closes automatically and protects parts against vacuum loss. Vac Saver HT can be used in combination with our quick disconnects like AQD 500TF and our Airflow vacuum hoses.

1/4 inch male NPT



Vac View 10

Clean Room Essential

| Graduations | Construction | Range | Quick Disconnect Plug / Socket |
|-------------|--|--------------------------|--------------------------------|
| 0,5 SCFH | Acrylic body with carbon steel connections | 0 to 4,7 litres / minute | |
| Description | | | |

The Vac View 10 leak indicator allows the instant detection of both high and low level leakages within a vacuum bag. Airflow through the Vac View causes the internal ball to oscillate and float inside the acrylic body, displaying a definite airflow reading which can be read off against the scale. This allows the size of the leak to be easily quantified.

Supplied with AQD 500TF plug and socket fitted



VacLeak LEQ-70

| Frequency Response | Equipment Components | Display |
|--------------------|--|-----------------------|
| 38-42 kHz | Receiver, headphones, hollow probe and carrying case | Ten element bar graph |
| Description | | |

The latest VacLeak LEQ-70 Series 3 is a compact economical vacuum leak detector for finding leaks in vacuum bags, sealant tapes, hoses and fittings. The VacLeak LEQ-70 Series 3 has improved circuitry for 20% more sensitivity to convert the ultrasonic sound produced by leaks to an audible level and also visually display the leak on an LED meter. With clearer sound technicians can detect leaks faster than ever before.



Gauges, flow meters and ultrasonic detectors & tools for prepreg laminating

Airsweep

Clean Room Essential

| Description | Product Reference | Colour | Material | Length |
|--|---------------------------|--------|----------|--------|
| Airsweep is a HDPE paddle, designed to help compact prepregs and wet lay-ups into a difficult radius. Airsweep also aids in removing wrinkles and trapped air between plies. Airsweep has a grip ridge in the centre for finger comfort which also helps in applying pressure. | Airsweep | White | HDPE | 10cm |
| | Airsweep R2 (with handle) | White | UHMW PE | 11,5cm |
| | Airsweep R3 (with handle) | Black | Nylon | 11,5cm |



Shop Shears

Cuts Glass, Carbon & Aramid

| Description | Product Reference | Type | Length | Weight |
|---|-------------------|-----------------|------------|--------|
| Shop shears are lightweight and stronger than most all metal shears. The Shop shears have larger handles to reduce stress and thicker blades for heavy duty cutting. Shop shears are one of the hardest and smoothest cutting shears available, with approx. 60 HRC, hardened throughout. | SS-7205-8 | Straight shears | 20cm / 8" | 150g |
| | SS-7230-9 | Straight shears | 23cm / 9" | 170g |
| | SS-7250-10 | Straight shears | 25cm / 10" | 210g |
| | SS-7280-11 | Straight shears | 28cm / 11" | 248g |
| | SS-7300-12 | Straight shears | 31cm / 12" | 306g |



Airtac 2 LH Spray Adhesive

Low Hazard

| Spray Style | Material Type | Characteristics | Colour | Can Size | Cans Per Case |
|-------------|---------------|---------------------------------------|--------|----------|----------------|
| Fine mist | Rubber based | Methylene chloride free, toluene free | Clear | 500ml | 12 cans / case |
| Description | | | | | |

Airtac 2 LH is a spray adhesive designed for temporary bonding. Airtac 2 LH can be used to hold dry materials on contours and vertical surfaces. This product is ideally suited to resin infusion applications for holding plies, release films, peel plies, and infusion mesh in place until the vacuum bag is secured. Airtac 2 LH has a fine mist spray pattern.

500ml 12 cans / case



Airsweep R3 and Shop Shears in use during BETA prepreg lay-up.

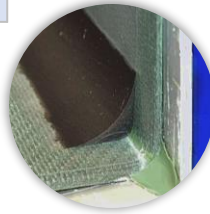
Pressure pads & accessories

Pressure Strip

Clean Room Essential

| Maximum Use Temperature | Colour | Base Material | Roll Sizes |
|-------------------------|--------|----------------------|-------------------|
| 230°C | Black | Uncured butyl rubber | 3mm x 25mm x 7,6m |
| Description | | | |

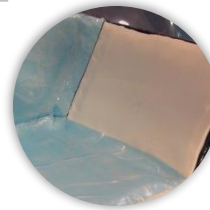
Pressure Strip is a butyl rubber tape used as an intensifier in corners where pressure is difficult to apply with only a vacuum bag. Pressure Strip is easily applied uncured on the prepreg layup and moulds to part shape during the cure cycle. Pressure Strip works from 120°C up to 230°C in autoclave or oven.



Airflex

| Maximum Use Temperature | Colour | Base Material | Roll Sizes |
|-------------------------|--------|------------------|--------------------------------------|
| 180°C | White | Uncured silicone | 6mm x 0,45m x 1,55m (5 Kg / roll) |
| Description | | | |

Airflex is an uncured silicone rubber which has been specially formulated for use as a pressure intensifier on complex shaped parts during vacuum bagging. It can also be used to provide vacuum bag protection from puncture due to bolt heads. Uncured Airflex can be applied over a release film on a prepreg lay-up, it will cure out in the early stages of cure and will then apply pressure intensification through prepreg curing stage. Alternatively, Airflex can be cured out on its own at 125°C in 20 minutes and then used as a cured intensifier over prepreg lay-ups.



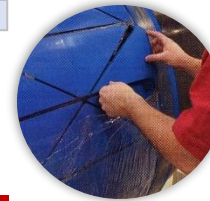
Aircast 3700 A & B

High Thermal Expansion

| Maximum Use Temperature | Colour | Base Material | Packaging |
|-------------------------|--------------------------------|---------------------|---------------------------------|
| 232°C | Tan (base) / Blue (cure agent) | RTV silicone rubber | 4,08kg Kit |
| Description | | | (Part A 3,63kg + Part B 0,45kg) |

Aircast 3700 A/B is a two component modified RTV compound designed for use in the manufacturing of flexible moulds and mandrels. Aircast 3700 A/B is also ideal for casting pressure pads. The high differential in thermal coefficient of expansion between Aircast 3700 A/B and a mould makes it useful in trapped rubber moulding.

20,42kg kit
(Part A 18,14kg + Part B 2,27kg)



Airfill 2

Clean Room Essential

| Maximum Use Temperature | Colour | Base Material | Packaging |
|-------------------------|---------------------|---------------|------------------------------|
| 232°C | Black : White (A:B) | Polyester | Quart Kit |
| Description | | | (Part A 1,22kg + Part B 28g) |

Airfill 2 is a high temperature polyester quick setting filler paste that can stand up to 232°C. Airfill 2 is typically used for pattern work, temporary mould repairs, trim and drill tools and assembly fixtures, gel-coat repairs. The thixotropic flow behaviour of Airfill 2 allows an easy application and good coverage.

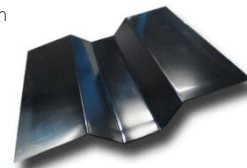
Gallon Kit
(Part A 5,78kg + Part B 114g)



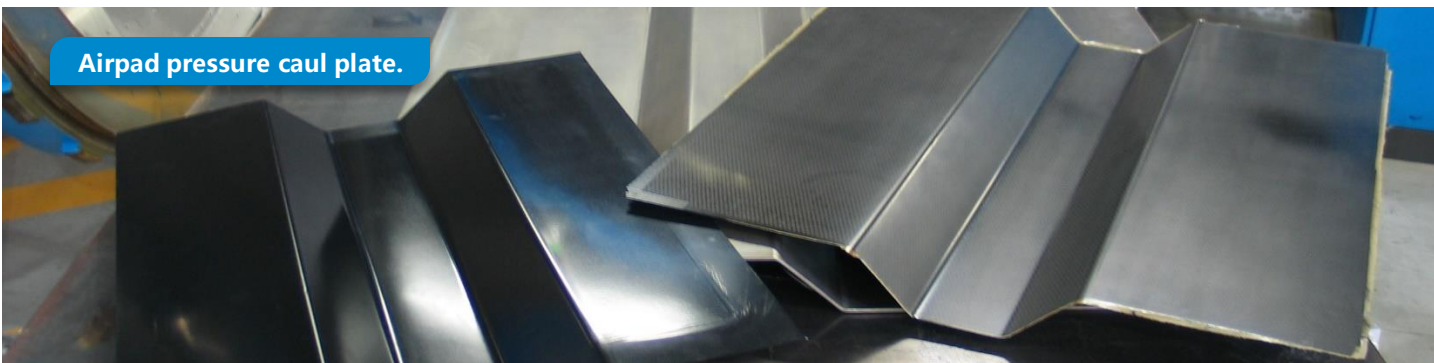
Airpad

| Maximum Use Temperature | Colour | Base Material | Roll Sizes |
|-------------------------|--------|---------------------|------------------------|
| 204°C | Black | Non-silicone rubber | 1,6mm x 137cm x 15,24m |
| Description | | | |

Airpad is an uncured, non-silicone rubber for manufacture of pressure caul sheets, flexible mandrels, and rubber tooling. Airpad caul sheets improve part quality on the vacuum bag side of the part. The Airpad pressure intensifier provides uniform pressure distribution during autoclave processing. Airpad will take high temperature similar to silicone rubbers but will not cause silicone contamination. Airpad is dimensionally stable when reinforced with Airtech Toolmaster Prepregs, which bond well and do not generate volatiles that could also cause delamination.



Airpad pressure caul plate.



Rubber intensifiers, shrink tapes, thermocouples & table cutting tops

A 575 & A 575 RC Shrink tape

| Maximum Use Temperature | Material | Starts to shrink | Sizes |
|-------------------------|-----------|------------------|-------|
| 204°C | Polyester | 79°C | |
| Description | | | |

A 575 high shrink tape is a flexible polyester tape. Ideal for mandrel wrapping aircraft tubular parts, golf shafts, tennis rackets, fishing rods, etc. A 575 RC is coated with a non-silicone release agent for direct release. This eliminates the need for release films or release fabrics used under A 575. The release coating is on the outer surface of the tape roll. A 575 and A 575 RC are available with the P3 perforation for evacuation of volatiles.

25mm x 91,4m
 50mm x 91,4m



Auto-Couple 20, 24 & 28

Clean Room Essential

| Maximum Use Temperature | Thermocouple Type | Product Reference | Sizes |
|-------------------------|--|-------------------|---------------------------|
| 246°C | Type J moulded male plug & Tig welded junction | Auto-Couple 20 | 20 Gauge (0,81mm) x 4,57m |
| Description | | Auto-Couple 24 | 24 Gauge (0,51mm) x 4,57m |
| | | Auto-Couple 28 | 28 Gauge (0,32mm) x 4,57m |
| | | Auto-Couple EXT | 3m; 6,1m & 9,1m |

Auto-Couple is an economical, ready to use thermocouple, designed to reduce vacuum leakage during autoclave temperature measurement. The male connector is welded to the wire extrusion, eliminating any user assembly. Auto-Couple may be used repeatedly. Auto-Couple EXT thermocouple extension wires bridge the long runs between part thermocouples and jack panels in the autoclave. Auto-Couple EXT features a rugged construction that allows for reuse in the autoclave.

Note: Type K thermocouple can also be supplied.



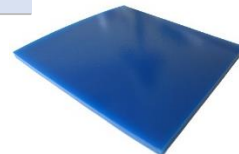
Durocast

Clean Room Essential

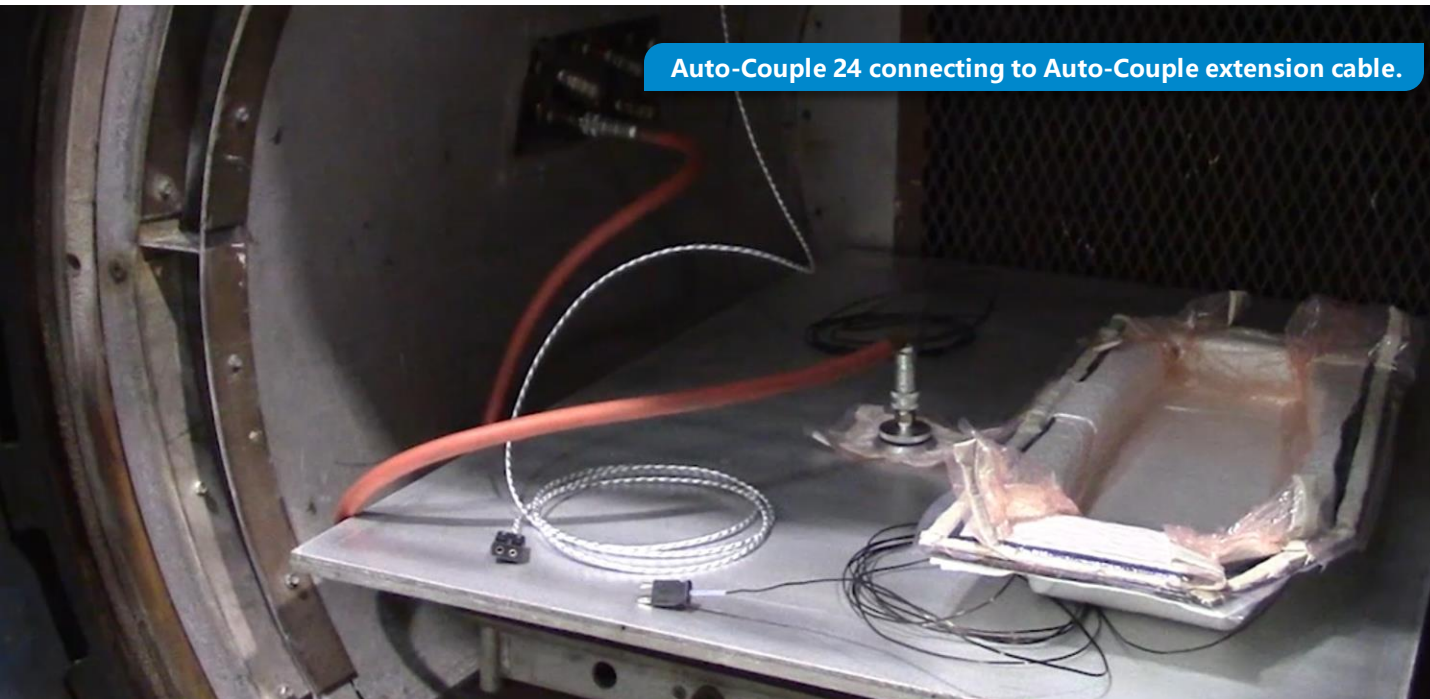
| Colour | Material | Thickness | Sizes |
|-------------|--------------|-----------|-------|
| Blue | Polyurethane | 6mm | |
| Description | | | |

Durocast table tops are manufactured using the highest grade urethane available. The cutting surfaces always provide a smooth, non-contaminated working surface. Our standard size, colour and gauge table tops can be certified to be silicone free.

0,91m x 1,83m
 1,22m x 2,44m
 1,22m x 3,66m



Auto-Couple 24 connecting to Auto-Couple extension cable.



Kitted & custom engineered products

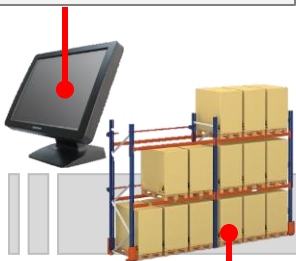
Customisation of materials

- Cut to shape materials
- Printing on materials
- Welded materials
- Sewn materials
- Bonded materials
- Assembled materials
- Kitted materials

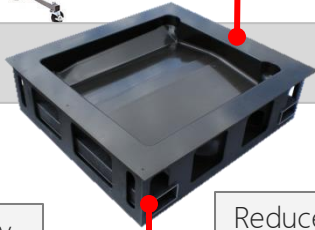


BENEFITS

Simplify Purchasing
Include Consumables on BOM
Predict usage more accurately



Increase Stores Efficiency
Simplify stock control
Introduce line feed
Reduce overstocking space



Reduce Touch Labour
Reduce time spent trimming
Reduce cutting error waste
Reduce bagging time

Reduced Operator Motion
Reduce travel time to rack
Reduce waiting & restock times
Reduce materials cutting times



Reduce Cost of Waste
Get Nesting efficiencies
Reduce waste material
Reduce waste disposal costs



Reduce Cycle Time
Reduce time spent bagging
Increase product throughput



Improve repeatability & Part quality
Establish bagging standards
Reduce cross shift variations
Reduce bagging error root cause part faults

Combo-Tech

Combo-Tech combination of Peel ply / Release film / Breather



Benefits

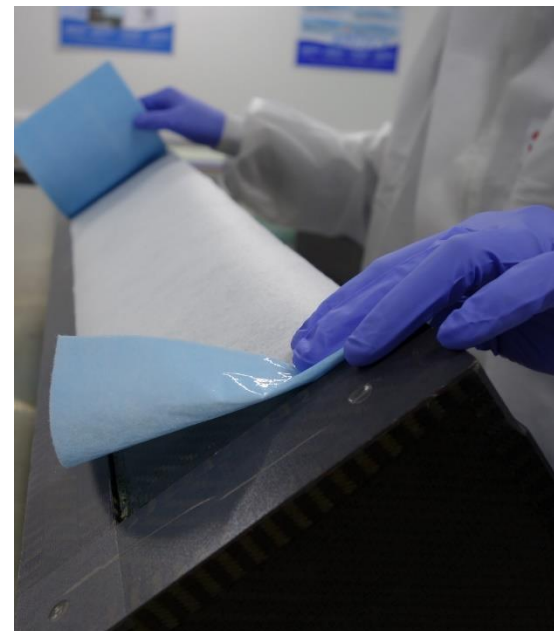
- Reduce kitting labour & cycle times.
- Controlled resin bleed out to reduce weight.
- Reduce number of materials.
- Improve surface finish & laminate quality.
- Reduce cost of rework & cost of scrap.

How to Combo-Tech

1 Choose your materials, include detail such as, e.g. Product type, weight, thickness, color, perforation, etc.

- 2** Choose your Combo-Tech
- Roll up orientation (which material is on outside, middle and inside)
 - Edge style (untrimmed, trimmed, staggered)
 - Roll width and preferred length (these will be based on standard sizes of individual rolls to minimize waste)

- 3** Contact Airtech
- with your request and we will provide a quote with lead time and minimum order quantity that will apply.



Airtech Europe customer service



Global manufacturing & Local Inventories
Delivering Short Lead Times. AAMG: >98% OTD



Customer Service
Team Contacts



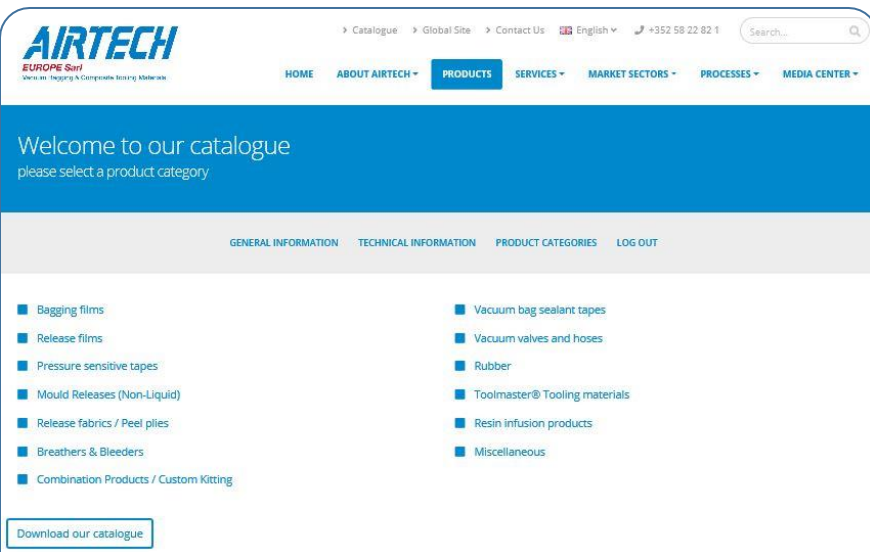
Development, Innovation &
Continuous Improvement



Technical Support, Training Workshop & On-site Training Support



Quality System Accreditation



Online Catalogue with Technical Data Sheet & Safety Data Sheet to Download,
available in 6 languages.



Sample Service



Recyclable Packaging

Dedicated to the needs of our customers

Airtech has been a supplier and supporter of all forms of Motorsport since the 1980's. We continue to develop new materials specifically for Automotive Composites using expertise developed in all composite industries such as Aerospace, Wind Energy, Marine etc.



All American Racers

Swift 009.c Champ Car

On display at Airtech International, Huntington Beach, this Champ Car is an example of a full composite race car designed and built in the USA with Airtech materials.



| | |
|------------|------------------|
| Driver: | Michael Andretti |
| Racing: | 1998 Cart |
| Season: | |
| Chassis: | #008 |
| Weight: | 1550 lbs. |
| Top Speed: | 220 Mph+ |



Need more Information, a Quote or a Sample ?

Please contact our customer service team

Phone: +352 58 22 82 1

Email: sales@airtech.lu



About Airtech Europe


Differdange, Luxembourg


www.airtech.lu

www.airtech3D.com

- Airtech Europe is a division of Airtech Advanced Materials Group, the largest manufacturer of vacuum bagging and composite tooling materials for prepreg / autoclave, resin infusion, and wet lay-up processes up to 426°C. Our product line consists of: vacuum bagging films, release films, pressure sensitive tapes, mould releases (non-liquid), peel plies, breathers & bleeders, sealant tapes, vacuum bag connectors & hoses, rubber, pressure pads, cutting tools, vacuum leak detectors, shrink tape, PTFE coated fibreglass, tooling prepregs and resins, and carbon and glass reinforcements.
- With nearly 50 years of extrusion experience, we've taken the next step into additive manufacturing. **Print-Tech®** is our new large scale additive manufacturing or 3D printing tooling service for composites. Large scale tooling in the form of trim fixtures, holding fixtures, and layup moulds can be designed, tooled, and built faster without compromise quality. Also, we manufacture a full line of **Dahltram®** tooling and **Dahlpram®** purging resins.
- Airtech Advanced Materials Group is family owned. We have six locations strategically placed worldwide: Huntington Beach, California, USA; Chino, California, USA; Springfield, Tennessee, USA; Differdange, Luxembourg; and Tianjin, China. All of our facilities offer technical assistance and are ready to meet your composite production challenges.
- Airtech Europe is EN 9100:2018, ISO 9001:2015 and ISO 14001:2015 certified.

Contact Us

 **Address:** 18, ZI Haneboesch,
L-4562 Differdange
Luxembourg

 **Phone:** +352 58 22 82 1

 **Email:** sales@airtech.lu

Find Us

www.airtech.lu
www.airtech3D.com

