

CHIARO

LIGHTING INTEGRATION FOR  **Armstrong**

SACKLIGHT
Designed and Made in Italy

One fusion of Technique and Design for one perfect lighting.

Designed and produced in Italy since 1998 and exported to more than 100 countries worldwide.

Index

04-05 | **What is CHIARO**

06 | **Technical specs**

07 | **Size**

08 | **Sections 2”**

09 | **Sections 3.25”**

10 | **Sections 5.25“**

11 | **Example of installation**

12-13 | **Photometric case study**

14-17 | **Cables position and options**

18-21 | **Gallery**

CHIARO

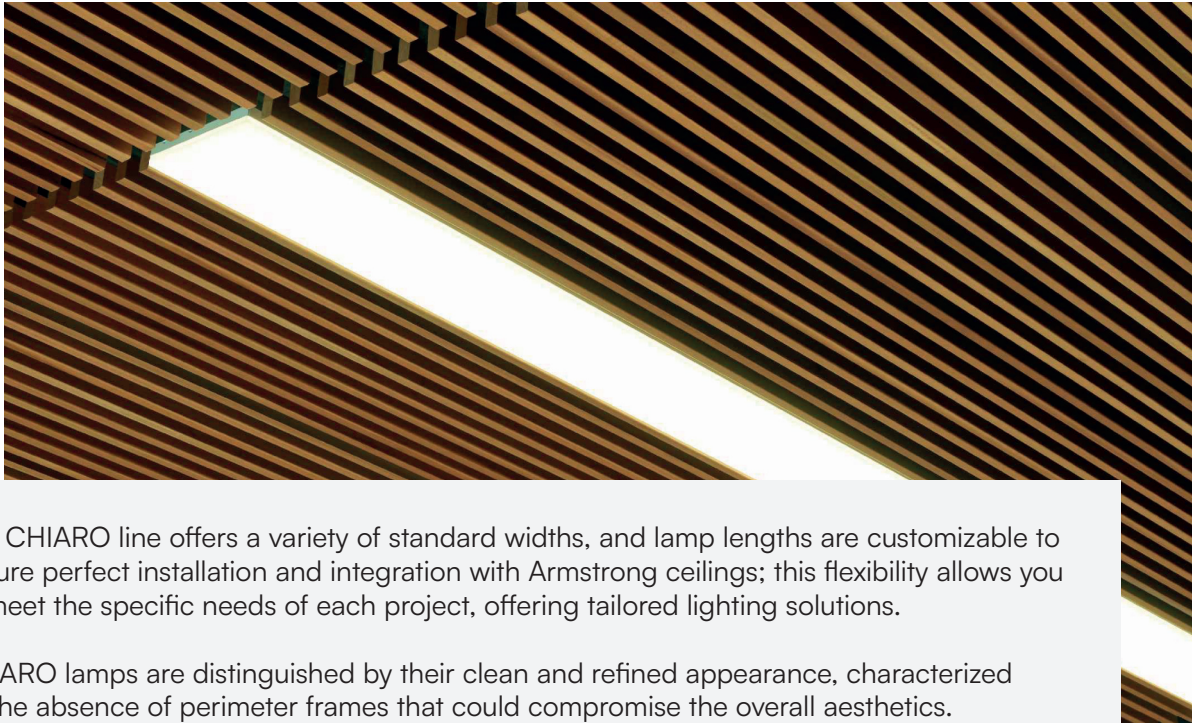
The architecture of light.

The CHIARO line enthusiastically represents one among our great creations, a product series developed in collaboration with Armstrong Ceilings Solutions, the renowned American company specializing in ceiling and wall solutions.

With careful design, the CHIARO line integrates harmoniously with Armstrong Ceilings, providing uniform, glare-free lighting for the rooms in which it is installed.

Reflected light technology is one of the most distinctive features of this product line. Thanks to it, light emission is uniform across the entire surface, preventing the formation of brightly lit areas or annoying glare spots. The result is homogeneous lighting that creates a pleasant and comfortable environment.

The luminous surface of CHIARO products is made of an anti-reflective satin material, so as to avoid any visual disturbance or discomfort resulting from unwanted reflections. Standard finishes available for the housing include RAL 9010 White and Black, but you can request color customization according to the RAL scale to match the product to the desired aesthetic for your environment.



The CHIARO line offers a variety of standard widths, and lamp lengths are customizable to ensure perfect installation and integration with Armstrong ceilings; this flexibility allows you to meet the specific needs of each project, offering tailored lighting solutions.

CHIARO lamps are distinguished by their clean and refined appearance, characterized by the absence of perimeter frames that could compromise the overall aesthetics.

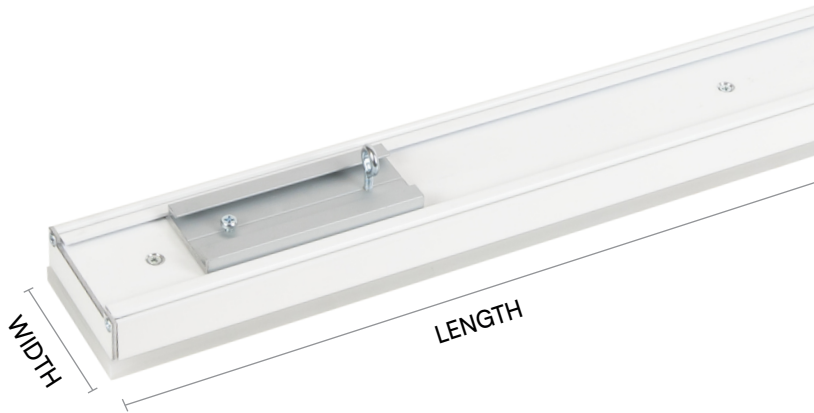
The synergy between Armstrong Ceilings' experience in the ceiling sector and Backlight srl's expertise in producing high-quality lighting results in a product that combines functionality, aesthetics and exceptional performance : CHIARO

Technical Specs

COLOR TEMPERATURE	 2000 K 2700 K 3000 K 3500 K 4100 K 5000k Tun. White 2000-6500K Tun. White 2700-6500K Custom range Tun. White*
	*Under request for a minimum order quantity to be define.
CRI	> 95
INPUT VOLTAGE	24VDC
DRIVER	AC DC 24V DC OUTPUT (class 2 Power Unit)
DIMMABILITY	✓ by all existing systems (PWM, ELV/MLV, 0-10V, DALI, DALI 2, LUTRON, DMX ...)
POWER CONSUMPTION	STANDARD BRIGHT 14 W / meter - 4.5 W / foot (long side) HIGH BRIGHT 28 W / meter - 9 W / foot (long side)
LUMEN DELIVERED	STANDARD BRIGHT 890 lum del / meter - 290 lum del / foot (long side) HIGH BRIGHT 1780 lum del / meter - 580 lum del / foot (long side)
IP GRADE	IP40 for Dry Location (IP54 for Damp Location under request) / IK10
DIMENSIONS	Min Length 4" (101.6 mm) Max length 120" (3048 mm) Widths 2" (50.8 mm) - 3.25" (82.55 mm) - 5.25" - (133.35 mm)
MAX DISTANCE	Max distance between driver and fixture 10 meters (~ 400"). For longer distances contact us.
CABLE SIZE	2 x 18 AWG
SDCM	3
LED EFFICACY	128 Lumen / Watt
WEIGHT	25 Kg /mq (5.7 lbs / sq. ft)
LIFE TIME	70.000 hrs
WARRANTY	3 Years (36 month)
CERTIFICATIONS	

FOR INFO AND ORDERS CONTACT US AT chiaro.armstrong@backlightsrl.com

Sizes



STANDARD LENGTHS:

23" — 584,2mm

23.375" — 593,725mm

47" — 1193,8mm

47.375" — 1203,325mm

95" — 2413mm

95.25" — 2419,35mm

95.75" — 2432,05mm

STANDARD WIDTHS:

Min Length

4" — 101.6 mm

Max length

120" — 3048 mm

Width

2" — 50.8 mm

3.25" — 82.55 mm

5.25" — 133.35 mm

CUSTOM LENGTH:

from 4" - (101,6mm)
to 120" - (3048mm)

Section 2"

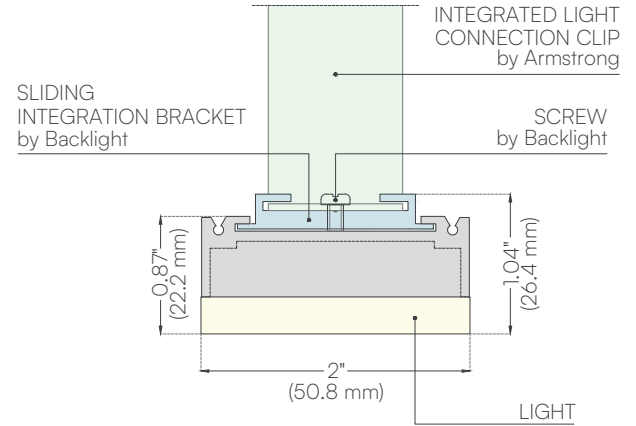
* STANDARD LENGTH:

23"	584,2mm
23.375"	593,725mm
47"	1193,8mm
47.375"	1203,325mm
95"	2413mm
95.25"	2419,35mm
95.75"	2432,05mm

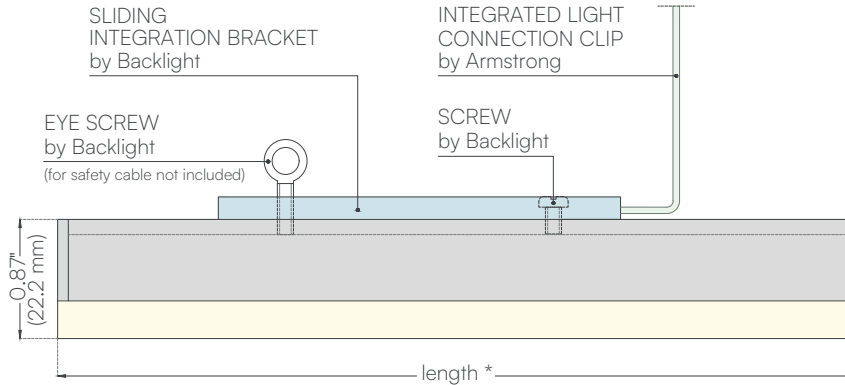
* CUSTOM LENGTH:

from 4" (101,6mm)
to 120" (3048mm)

CROSS SECTION



LONGITUDINAL SECTION



Section 3.25"

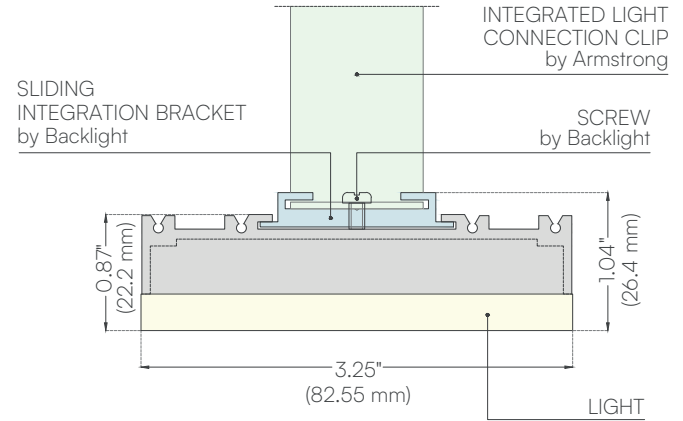
* STANDARD LENGTH:

23"	584,2mm
23.375"	593,725mm
47"	1193,8mm
47.375"	1203,325mm
95"	2413mm
95.25"	2419,35mm
95.75"	2432,05mm

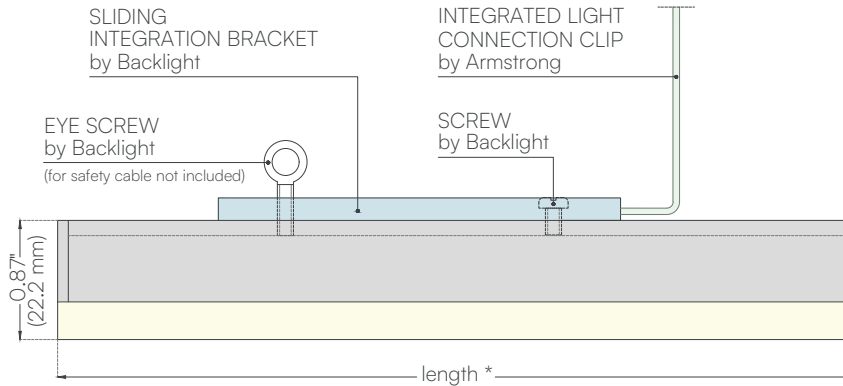
* CUSTOM LENGTH:

from 4" (101,6mm)
to 120" (3048mm)

CROSS SECTION

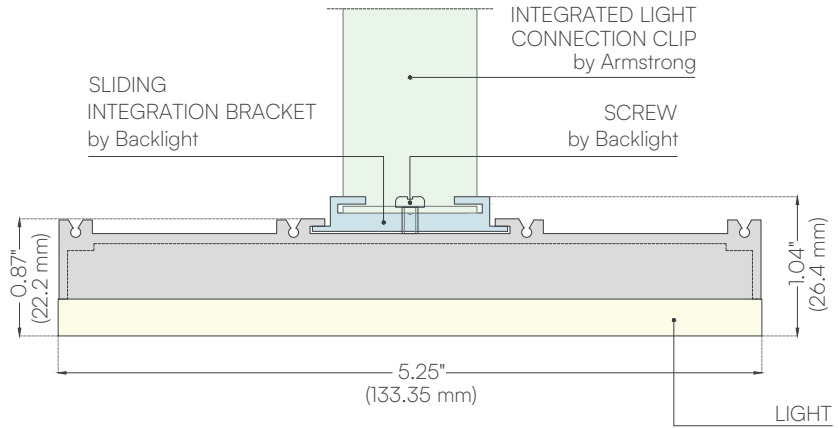


LONGITUDINAL SECTION

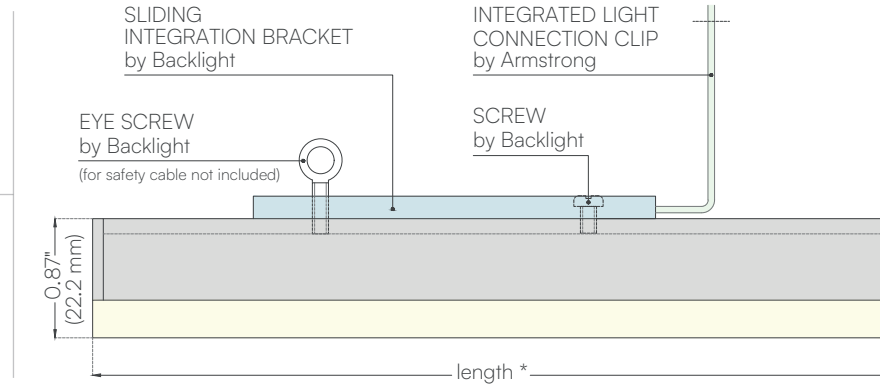


Section 5.25"

CROSS SECTION

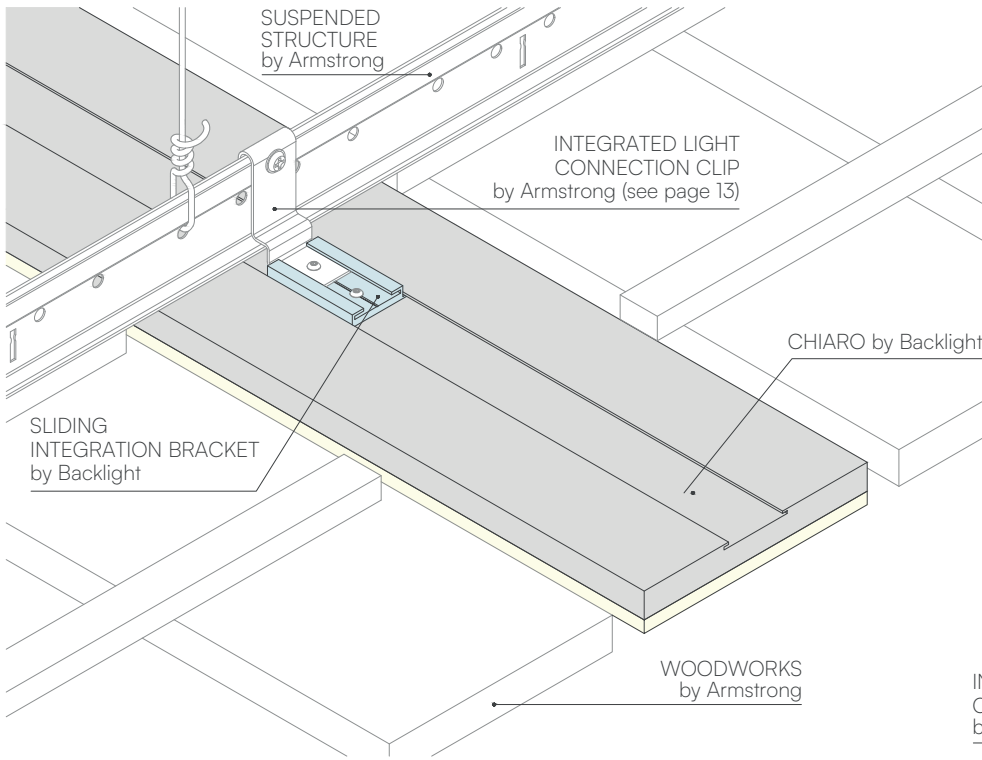


LONGITUDINAL SECTION

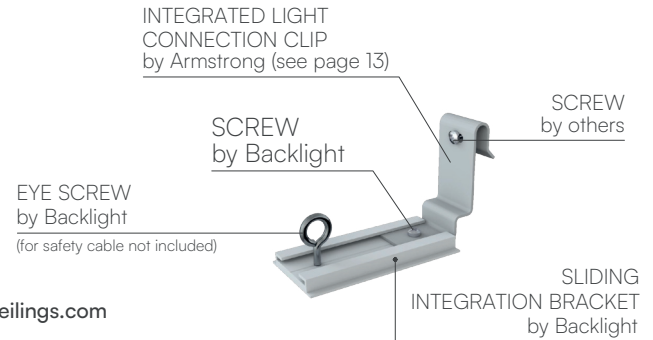


* STANDARD LENGTH: | 23" | 23.375" | 47" | 47.375" | 95" | 95.25" | 95.75" | CUSTOM LENGTH: from 4" - (101,6mm) to 120" - (3048mm)

584,2mm	593,725mm	1193,8mm	1203,325mm	2413mm	2419,35mm	2432,05mm
---------	-----------	----------	------------	--------	-----------	-----------



Example of installation by Armstrong® Ceiling Solutions

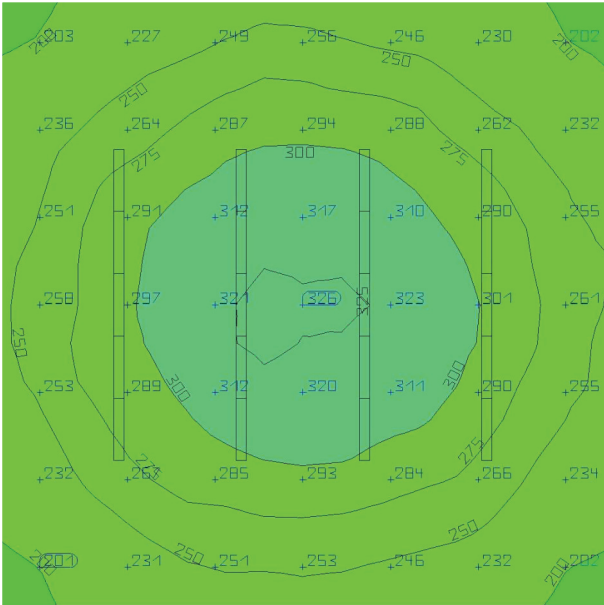
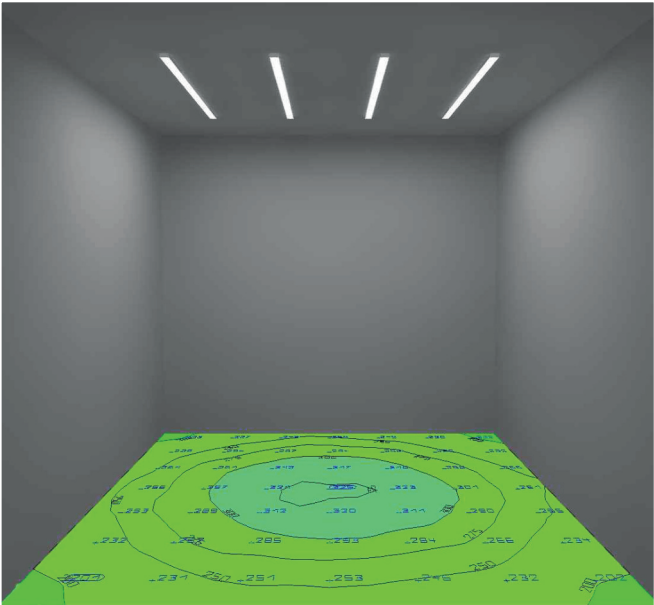


For full Armstrong® WoodWorks® Ceiling Systems selection go to www.armstrongceilings.com

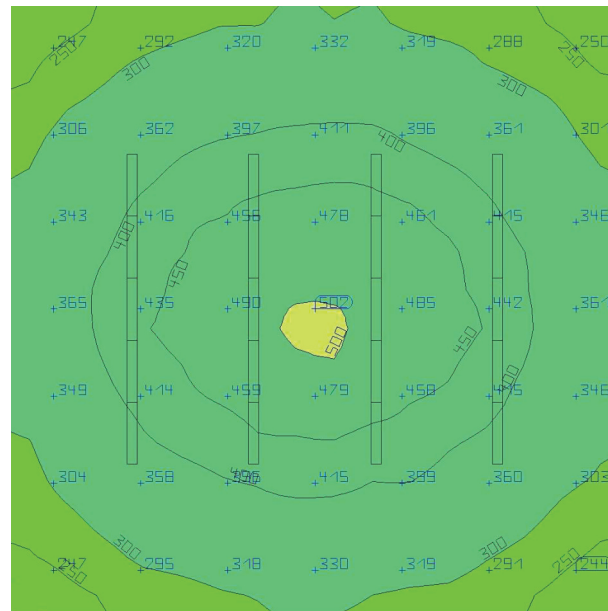
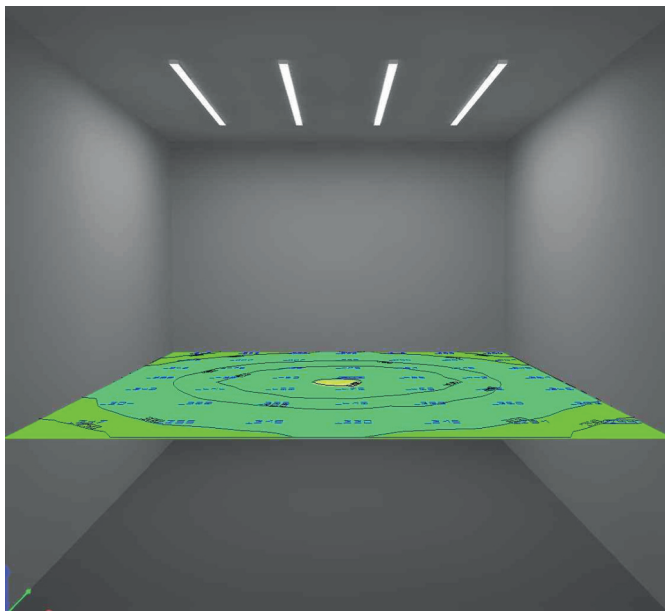
Photometric case study

Example of a room 3 x 3 x h 2.70 meters (118" x 118" x h 106") with 4 lamps HIGH BRIGHT 50.8 x 1524 mm (2" x 60") static white.

Floor calculation H 0.00 meters (0")

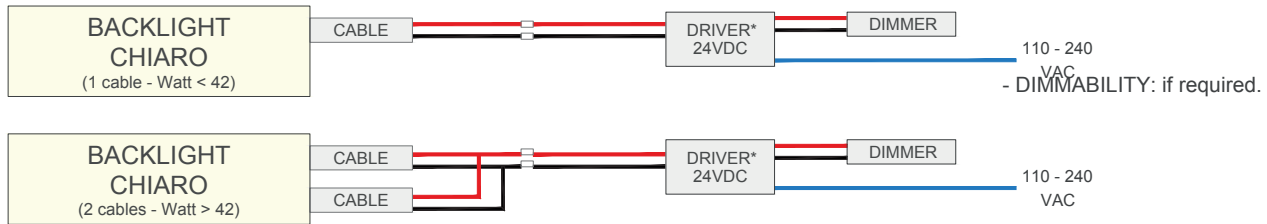


Desk calculation H 0.80 meters (31.5")

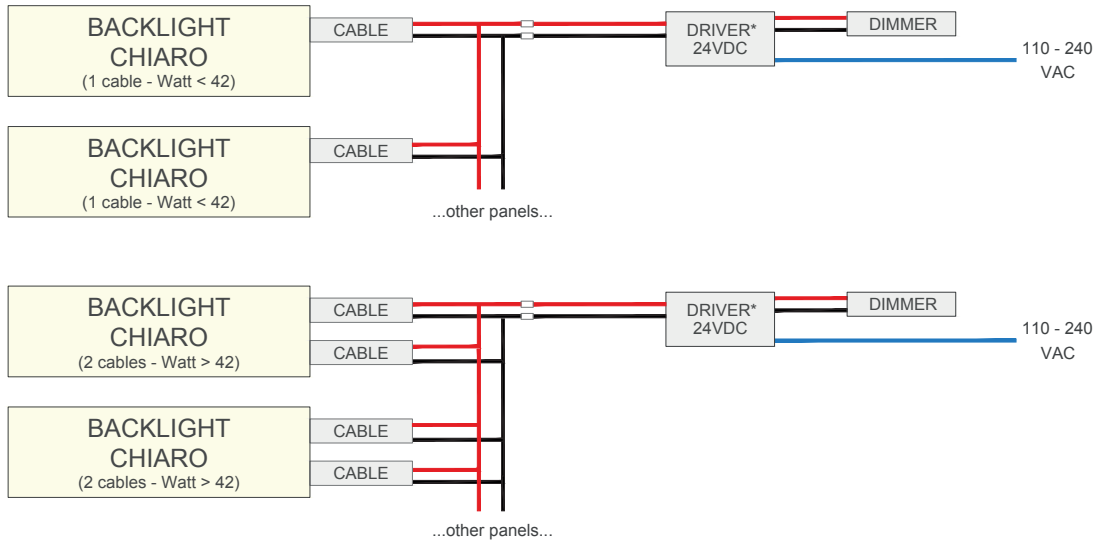


Wiring

Example of static white - 1 driver for 1 panel



Example of static white - 1 driver for more panels



Assembly instructions

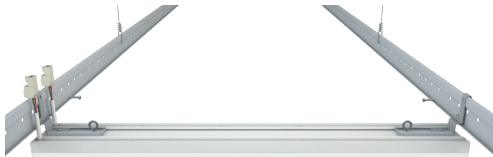
- 1) Insert the Sliding Integration Brackets in the track on the back of CHIARO lamp.



- 2) Screw the Armstrong® Integrated Light Connection Clips on the Sliding Integration Brackets (for type of clips refer to our technical catalogue).



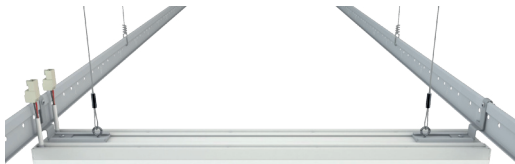
- 3) Slide the system manually and screw it on the Armstrong® suspended structure.



- 4) Turn the eye/ring screws by hand for a safety lock.



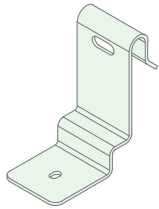
- 5) if needed, use the eye/ring screws for safety cables.



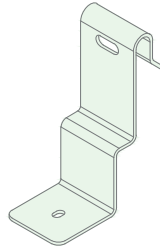
- 6) Connect the power cables coming from the driver and enjoy your light.



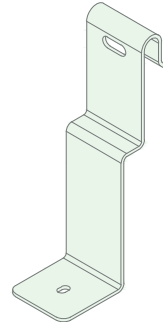
Some example of Integrated Light Connection Clips* by Armstrong® Ceiling Solutions



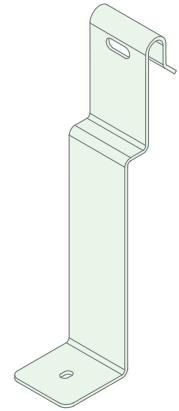
8171WLSPC01
WoodWorks® Linear
Solid Wood Panels



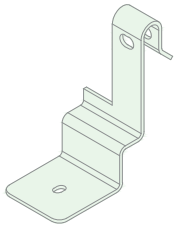
8171WGB0C01
WoodWorks® Grille



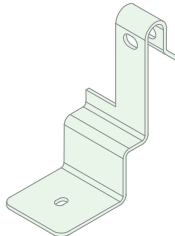
8171WGB0C02
WoodWorks® Grille



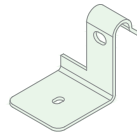
8171WGB0C03
WoodWorks® Grille



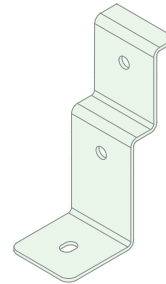
8171WGTTTC01
WoodWorks® Grille Tegular



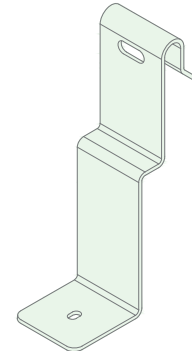
8171WGTTTC02
WoodWorks® Grille Tegular



8171WGTTTC03
WoodWorks® Grille Tegular



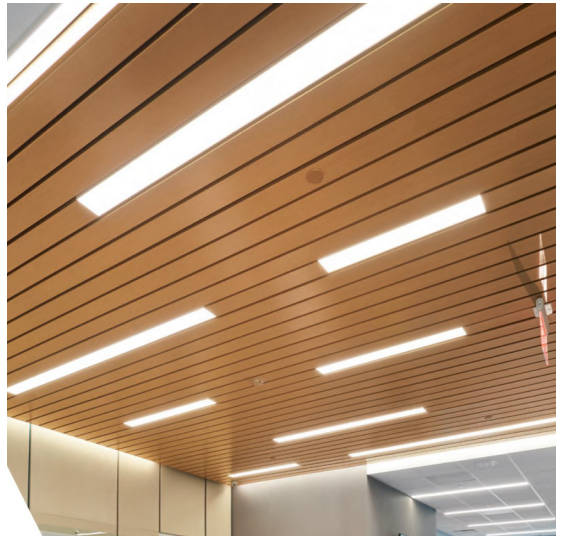
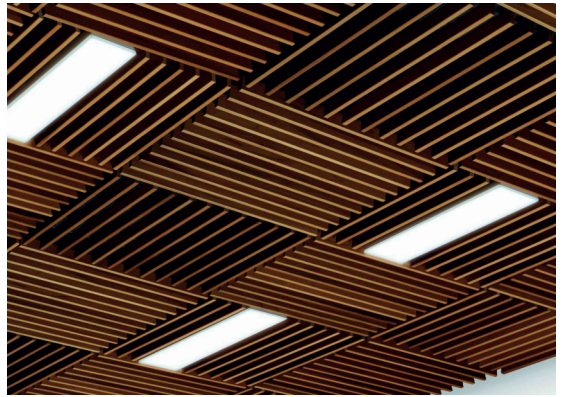
8171WGTMTC01
(mount on 24" stabilizer bar)
WoodWorks® Grille Tegular

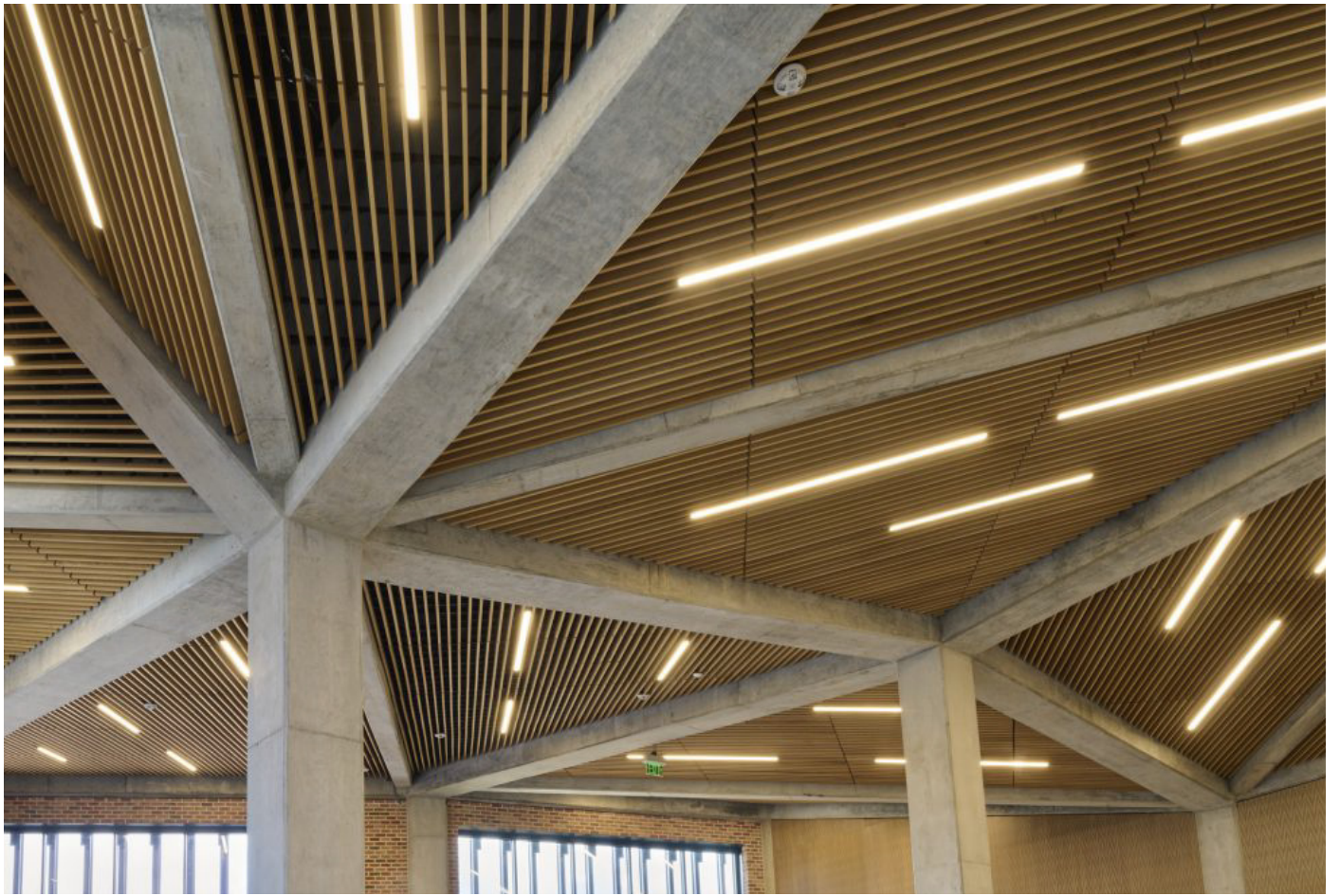


8171WLVPC01
WoodWorks® Linear Veneered Panels









*Discover all our most famous products
that have made and still make lighting history.*

MAGIC CLOUD Custom Uniform Lighting Panels

FLUSH Custom Uniform Lighting Bars

HALO Custom uniform Lighting Frames in a single piece

HIDE Line of Uniform Lighting Circles

PILL Plasterboard built-in Square and Round Lights

WETTY WET / IP67 Line

CHIARO Lighting Integration for ARMSTRONG CEILINGS

STAMP Creative light on plasterboard



www.backlightsrl.com

BACKLIGHT

Via Alessandro Volta, 5
20876 Ornago (MB)
Italy

+39 039 6010396
www.backlightsrl.com
info@backlightsrl.com

f @ in | **BACKLIGHTSRL**