

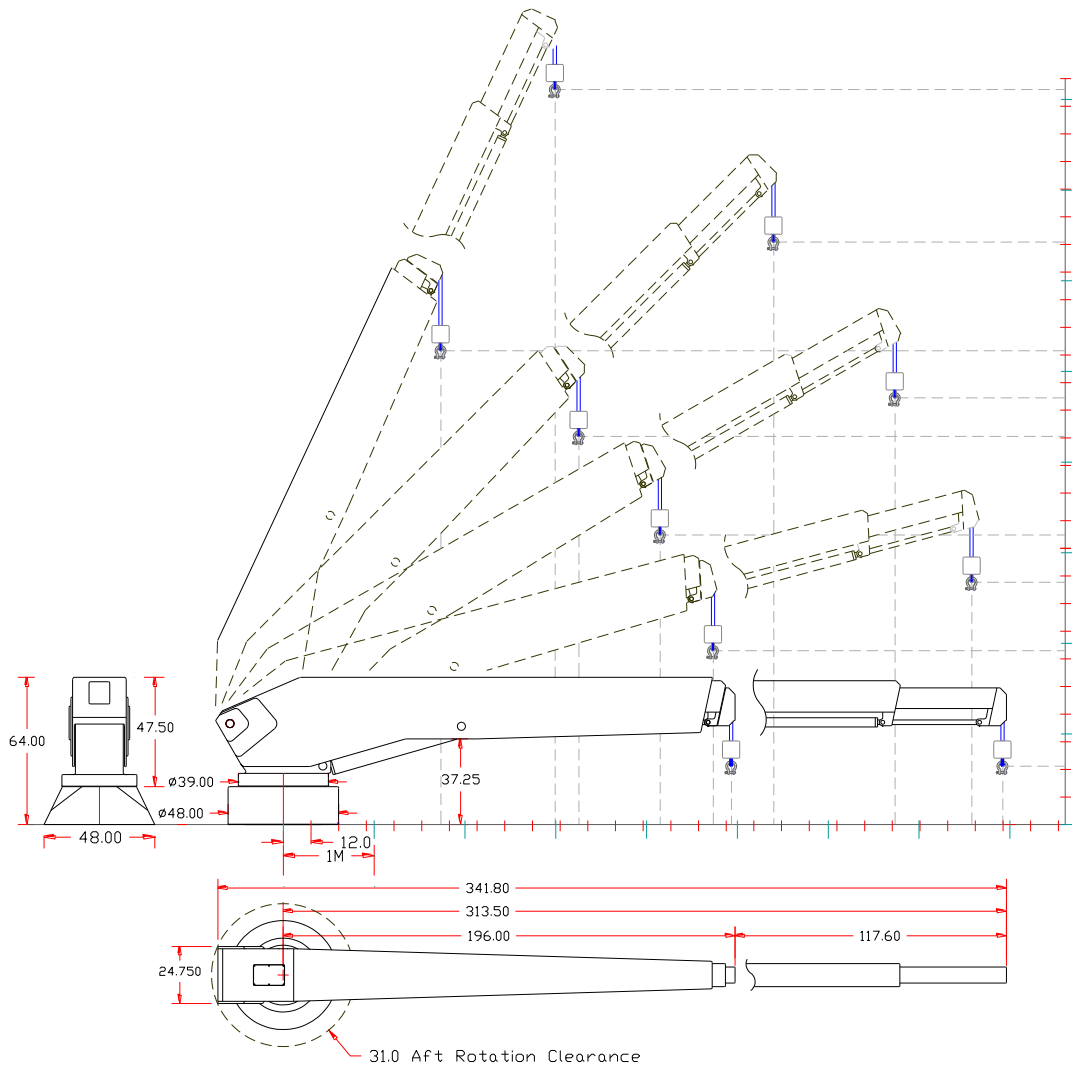


EZ-Systems Double-Telescoping Type Hydraulic Deck Crane

For over a decade the EZ-Systems Hydraulic Deck Crane has proven to provide the highest state-of-the-art yacht crane technology in an aesthetically pleasing design. The EZ-Systems hydraulic deck crane is available in lifting capacities of up to ten thousand pounds, and in stowed boom lengths starting at ten feet. All of these cranes are built to order and to suit our individual client's needs. Any of these cranes may be special-ordered built to MCA Mega Yacht Code / Classification Society compliance. The Double-Telescoping deck crane's unique design allows the crane to stow in almost half of its maximum deployed length. The EZ-8000-DEX crane's Double-Telescoping aluminum boom is capable of being loaded to its full safe working load capacity in any position without restriction. The intelligent engineering inherent in this design allows distributed load-deflection across the boom during moments of dynamic loading, reducing the amount of shock-loading transmitted to the deck. Virtually silent-operating, our Hydraulic Linear Winch system, a totally non-fouling winch design reflects the innovative and dependably safe operating characteristics built into the extending boom. This feature adds the additional element of operational safety as the linear winch travels with the boom extension during operation of the crane. This prevents any possibility of two-blocking the system causing damage to the cable. The crane features 300° hydraulic power rotation providing the ultimate in tender-handling convenience. The crane is remotely operated with a wireless joy-stick operated proportional control provided with an optional-use removable pendant. A pedestal base is the typical mounting structure for the EZ-Systems crane, although a standpipe mount may also be used in some applications. The EZ-8000-DEX Crane is powered by a 15-Hp hydraulic power unit located below deck. The EZ-Systems crane is finished to our highest standards. The aluminum structure is chromated and then primed with a two-part epoxy primer. The system is faired smooth, and then primed again. The crane is hand sanded, then moved into our heated finish booth where it is coated with a two-part urethane spray-applied paint finish. Our standard colors are Matterhorn white, Off white, and Snow white. All other colors will be special order and quoted upon request. The crane system is assembled and installed onto one of our three dynamic load-testing centers where our quality assurance team dynamic load tests and inspects every crane we produce prior to delivery to the customer. Warranty: 1-Year including materials, electrical, hydraulics and labor. See warranty for details.



EZ Deck Crane
Hydraulic Double Telescopic Series
8800lb (3991kg)
SOLAS



Mechanical Specifications				Electric – hydraulic specifications	
Hydraulic Boom Luffing: 0° to 66° with full load capacity.				24V DC Supply on a 20 amp breaker.	
<i>Crane Reach</i>	<i>Boom Angle</i>	<i>Retracted</i>	<i>Extended</i>	24V DC Joy-stick operated proportional control. * Manual control back-up. * Wireless proportional control is available as an option.	
Reach	65°	68" / 173cm	118" / 300cm	15 Hp HPU, 3000 psi / 203 bar, 7 gpm / 26 lpm output.	
Reach	45°	128" / 325cm	212" / 538cm	20 Hp HPU, 3000 psi / 203 bar, 9 gpm / 34 lpm output.	
Reach	30°	163" / 414cm	264" / 670cm	Fluid type: AW-68 or AW-34, ISO quality 17/15/12	
Reach	15°	186" / 472cm	298" / 757cm	Available Rated Capacities	
Reach	0°	194" / 492cm	312" / 792cm		
Aft rotation clearance: 31.0" / 78.7cm 360° hydraulic power rotation.				EZ-4000-DEX: 4,400lb / 1995kg Up to 80,000 ft/lb	
Hydraulic Linear Winch system. Rigged 6:1 with Spectron 12 Plus fiber line. Stainless Steel Certified Load-Release Hook optional.				EZ-6600-DEX: 6,600lb / 2993kg Up to 100,000 ft/lb	
Cable pay-out: 28' / 8.53m				EZ-8800-DEX: 8,800lb / 3990kg Up to 200,000 ft/lb	
Crane weight: EZ-6600-KB-EX: 5600lb / 2540kg				Foot-pound capacity; maximum reach x lifting capacity.	
Weight, pedestal base (average): 1080lb / 490kg				12 Month limited warranty. © 2014 - NSI	