

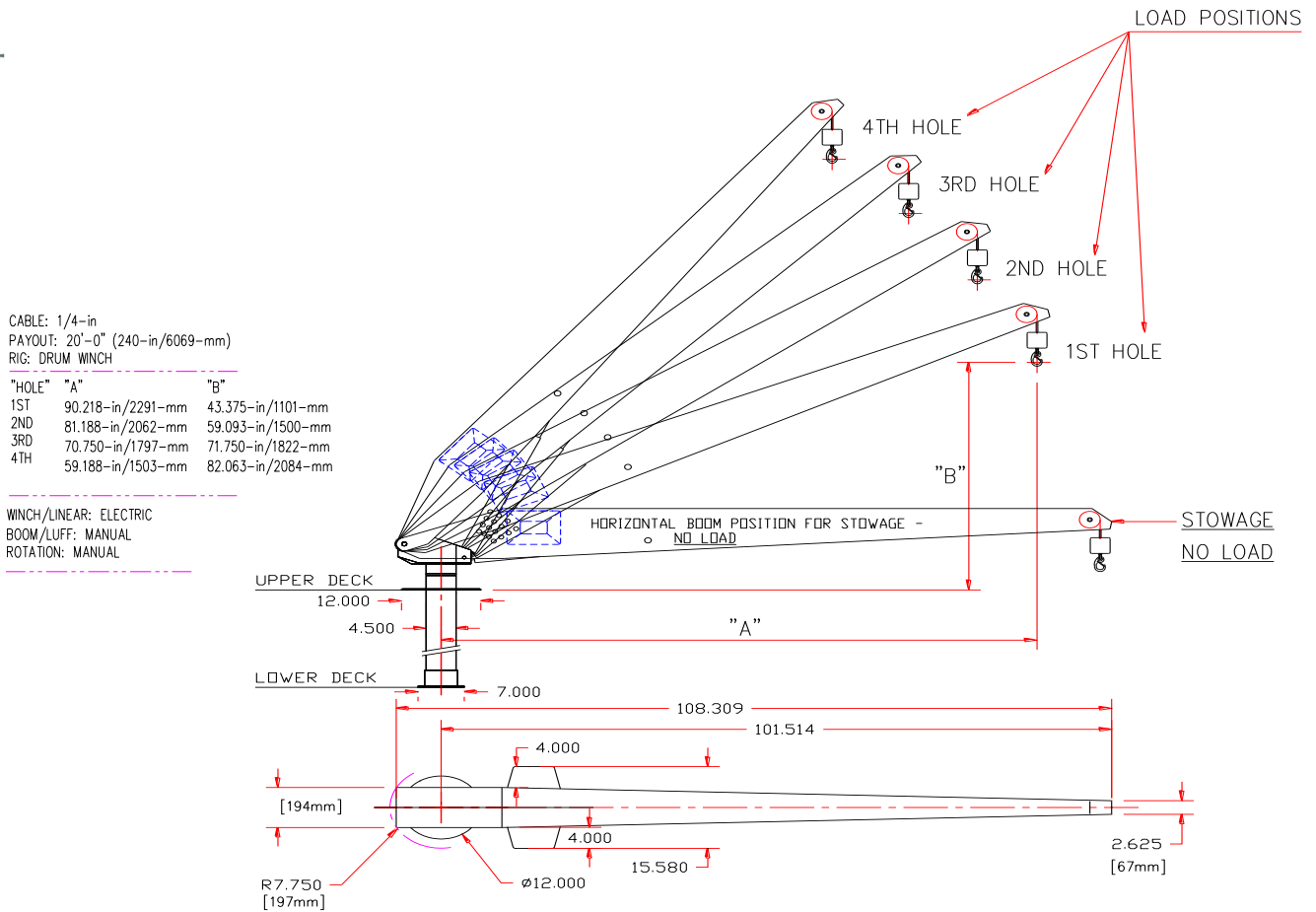


MC Series Mini Crane Electric Davit

- Winch: Electric drum winch with automatic braking in 12V or 24V DC.
- Manual boom articulation: Positive locking pneumatic boom assist system that reduces the weight of the boom/arm when lifting it into position. Four pre-set boom positions/angles for various reaches with full lifting capacity; boom angle is adjustable prior to lifting the load. Please note this davit is not designed to be loaded or hoist from the horizontal stowed position.
- Line/Cable Type: 20ft / 6m stainless steel wire rope with solid brass cable weight & stainless steel safety hook.
- Manual rotation/slew: 360-degree with a custom Delrin bearing package for ease of operation.
- Standpipe mounting structure: Through deck mount, aluminum construction with a welded upper deck flange, flange trim cover, lower trim ring and receiving socket. Standard deck flange angle is 0 degrees unless otherwise specified. Also available is a deck mount pedestal base, cylindrical [round] or pyramid [square].
- Control System: Removable, hand held control for cable in/out, low voltage DC with pendant & connector.
- Bushings: Composite high load bushings at stainless load pin to aluminum contact points.
- Paint: System is finished to our Nautical Structures high level of quality with urethane paint products. Our standard colors are Snow White, Off White & Matterhorn White. All other colors will be special order and quoted upon request.
- Davit is assembled and tested prior to shipment.
- 12 Month Limited Warranty: HYDRAULICS, ELECTRICAL AND LABOR IS INCLUDED.
(See Warranty for details)



MC Series Mini Crane Electric Davit 800lb - 102in 362kg - 259cm



Mechanical Specifications	Electric Specifications
Reach (Maximum at 25° position): 96in / 247cm Reach (Nominal at 35° position): 86in / 218cm	12V DC / 24V DC 115V AC, 60 Hz, 1 Ph 230V AC, 60 Hz, 1 Ph
Reach (Nominal at 45° position): 75in / 190cm Reach (Minimum at 55° position): 58in / 147cm	Remote control switch is wired to a 8ft / 2.43m removable pendant. Wireless remote control is available as an option.
Aft rotation clearance: 8.5in / 21cm	Use a minimum 4-gauge wire for supply power to a 80 amp breaker.
Manual rotation on Delrin bearings: 360°	For power runs in excess of 30' / 9m use a minimum 1-O wire. Consult wire size/ gauge chart for proper wire and breaker size based on length of wire run.
Planetary geared electric winch. Rigged with stainless steel wire rope, brass weight and stainless steel safety snap hook.	
Cable pay-out: 20ft / 6.1m	Rated Capacity
Manual Boom Luffing with PBAS, 4 Positions.	MC 800 lb. (362kg) Boom length: 102in / (2.59m)
System weight, Davit system: 135lb / 61kg System weight, Standpipe: 37lb / 17kg	12 Month limited warranty. © 2014 - NSI