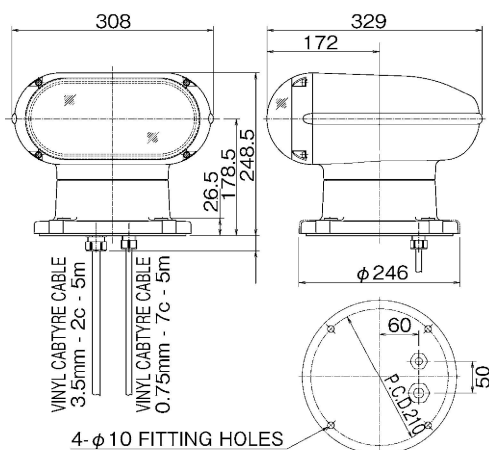


METAL-HALIDE LAMP TYPE REMOTE CONTROLLED SEARCHLIGHT

Reflector dia.	φ110mm - 90cut
Rated voltage	DC12V / DC24V
Rated current	Approx.8A / Approx. 4A
Lamps	Metal halide lamp 35Wx2 SCB-0155
Max. luminous intensity	600,000cd
Beam spread	Approx.7°
Range (1lx)	Approx.700m
Elevation & Turning	Electric remote control
Elevation angle	Up 15° Down 30°
Turning angle	360°(endless)
Elevation speed	Up approx. 7° / sec. Down approx. 6° / sec.
Turning speed	High approx. 30°/sec. Down approx. 11°/sec
Material	Aluminum alloy die casting
Protection degree	IP56
Weight	13.5kg
Color	Munsell N-9.5 (White)
Code no.	1122

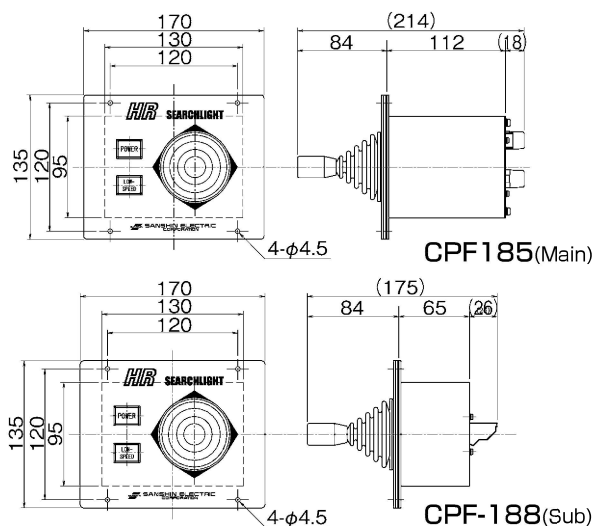
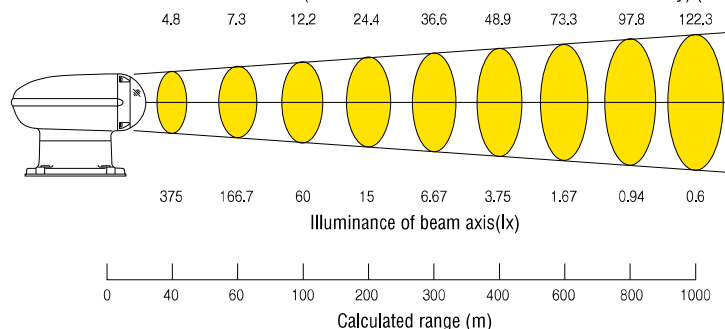
Dimension and specification are remote control type



Range of 150W xenon search light

- Lamp ... 35Wx2 xenon lamp
- Max. luminous intensity ... 600,000cd
- Beam spread ... 7°
- Atmospheric transmission factor ... 100%

Diameter of beam limits(Beam limits are 10% maximum luminous intensity) (mΦ)



Remote control panel CPF185 (Main)



Available 2-station control by a sub remote control panel (Option)