

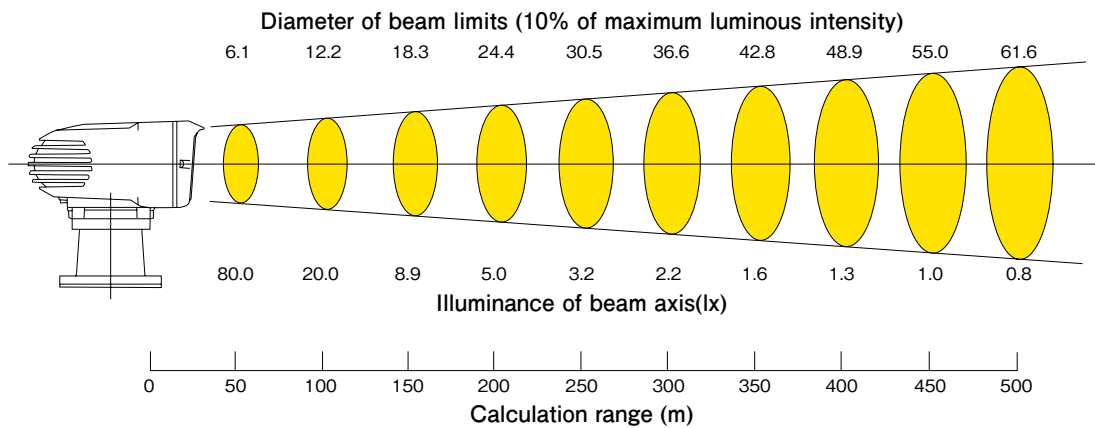
REMOTE CONTROLLED LED SEARCH LIGHT

TYPE:HRL-2070U/G

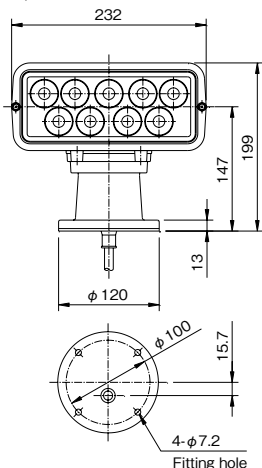
- This is LED type search light which is same brightness with halogen lamp type of HR-1012.
- There is no worry nothing running out of a bulb by the vibration by adoption of the LED. Life time is 40,000h, Power consumption is 1/3
- Search light can be used for both voltage DC12V and DC24V.
- All of specifications, material are same with conventional searchlight HR-1012 except lamp source of LED.
- Easy replacement from halogen search light to LED search light when it will be purchasing LED unit only.
- You can choose the operation method from electric remote control type (CPF53) or wireless control type.
(Available 2-station control by a sub remote control panel (Option))



Material	Aluminum alloy die casting
Input voltage	DC12V / DC24V
Input power	Approx. 3.0A (12V) / 1.6A (24V)
Max. luminous intensity	200,000 cd
Beam spread	Approx.. 7°
Operation method	Electric remote control or Wireless remote control
Remote control panel	CPF53 (Main) / CPF54 (Sub)
Elevation angle	Up 9° Down 17°
Turning angle	360° (endless)
Elevation speed	Approx. 2.8°/ sec
Turning speed	High 30°/ sec. Low 20°/ sec.
Color	Munsell N9.5 (White)
Weight	Approx. 4.2kg
IP Rated	IP56
Code	U Type 11511U / G Type 11511G



◆HRL-2070U



◆HRL-2070G

